



**Random security
coding function!**

MI-3IOR USER'S MANUAL



● Remote control key - 4EA

⚠ Caution!

As this is a keyless digital dead lock, damage may occur to parts of the dead lock system if it is not used according to the manual. Users should be fully aware of the manual and how to operate this product.

- This manual may change without notice in case of product improvement.
- Product specifications are subject to change without prior notice.
- This manual may not be edited or changed without the manufacturer's prior permission.

Product Features



Two-way Lock /Unlock System

2 way key solution (Max. 10EA of remote key & Max. 8EA of secret code) is providing convenience for children or elderly people.



Random Security Coding Function

When you enter your home with friends or other people, you don't want to show secret code to them. In this case, you may press any number randomly without limitation and then enter your secret code at final.

Then, you can open the door without revealing your secret code.



One Touch Mute Function

You can open the door with no operating sound not disturbing your neighbor.



Sound Control by 8 levels

Operating sound volume can be controlled by 8 level.



Movement Indicated by Various Lamp Colors

Operating status is indicated by 8 different color & lamp.



Auto Lock /Auto Re-Lock Function

Auto lock : When the door is closed, it is locked automatically.
It prevent from any mistake to forget locking the door.

Auto re-lock : When the door is not locked during over 10 seconds after unlocking by secret code, door lock is relocked automatically.



Double Lock System / Intrusion Warning Function

When you set double lock position (red color), the door lock can not be opened from outside by whatever solutions even enter registered secret code or registered remote key.
When trespassers try to open the front door by forcing it from outside or removing the deadbolt, the crime prevention sensor to be activated automatically with a strong warning alarm sound for your safety and comfort.



Check Battery Capacity & Low Battery Warning Function

It is each to check battery capacity with indicating function for remained battery capacity in 3 levels. And when the battery is low, it is indicating it by warning alarm sound & lamp.

Safety Caution



Do not disassemble or alter the lock. Assembling or disassembling the door lock may damage the product. Damages to the product caused by unauthorized persons may result in damages to your property. Please contact our Customer Service.



If the product generates harmful gases or smoke, please remove the batteries immediately from the product. If you do not take this step immediately, the product may suffer severe damage.



Please keep the product away from water or any liquids. If the product is exposed to salty water or liquids, please wipe off the moisture with a soft cloth. If moisture or foreign materials penetrate the product, remove the batteries immediately and contact the Service Agency or Customer Service Center for advice. Using a product contaminated with foreign materials may cause problems.



Please check the batteries every 6 months to see if the batteries are leaking and to check the cleanliness of battery terminals. If leakage is discovered, please wipe out with a dry cloth and replace the new batteries. In case of exposure to leakage, wash with soap and water immediately.



Do not clean the product with flammable materials such as alcohol, benzene or thinners. Such materials may damage the surface or cause a fire.



Batteries should not be exposed directly to heat sources or flames, or submerged in water, because they may leak or explode, resulting in severe damage. Please do not use damaged batteries.



Do not allow the battery electrodes to make contact with metals such as keys, as the battery may overheat, causing explosion or severe damage.



Please do not close the door with the deadbolt in the locked position. It may damage the product or cause a malfunction.



Do not force to pull the front cover. It may damage the product or cause a malfunction.



Please do not mix old with new batteries or use different types. Always use new alkaline batteries. Please make sure the batteries are inserted correctly (+/-) as indicated in the battery compartment. Otherwise, it may cause a leaks or explosions.

Table of Contents

Before using

| | |
|--|---|
| Product features & functions | 1 |
| Safety caution | 2 |
| Table of contents | 3 |
| Description of each parts and specification | 4 |
| How to replace battery / How to check battery capacity | 5 |
| How to apply external power in the emergency | 5 |

Basic Functions

| | |
|---|----|
| How to register/change secret code | 6 |
| How to register/change remote key (Delete all) | 7 |
| How to delete all secret code & remote key | 8 |
| How to use random security coding function | 8 |
| How to open from outdoor (Mute function) | 9 |
| How to close from outdoor | 9 |
| How to open/close using “One touch button” from indoor [Auto mode] .. | 10 |
| How to open/close using “Open knob” from indoor [Manual mode] | 10 |
| Auto/Manual system setting | 10 |
| How to controll volume level | 11 |
| How to suspend “One touch button” | 11 |
| (Guide of security system for “One touch button”) | |

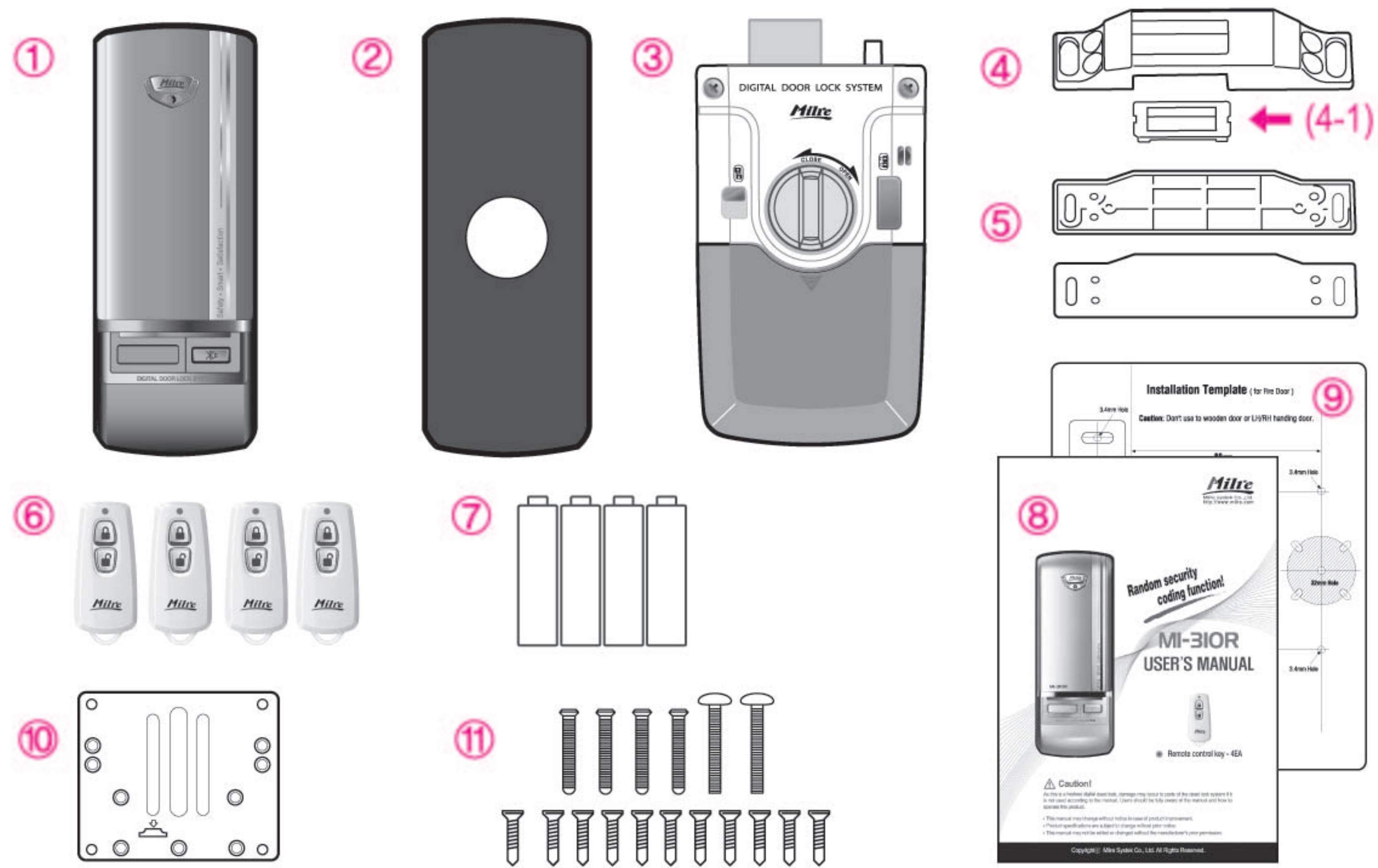
Applications

| | |
|--|----|
| How to set double locking system | 12 |
| Auto locking system | 12 |
| Auto re-locking system | 12 |
| Warning function against mischief or hacking | 13 |
| Warning alarm function against trespassing by force | 13 |
| Fire security system of temperature detecting sensor | 13 |

Others

| | |
|----------------------|--------|
| Chinese manual | 14 ~23 |
| Warranty | 24 |

● Product specifications and composition



| Name | Product Specification | Remark |
|---------------------------|---|--|
| 1. Front Ass'y | 66(W) x 173(H) x 29.5(D)mm | |
| 2. Front Ass'y Rubber Pad | 69(W) x 179(H) x 4.5(D)mm | |
| 3. Back Ass'y | 154(W) x 93(H) x 37(D)mm | |
| 4. Strike | 30(W) x 140(H) x 28(D)mm | |
| 5. Strike Spacer | 31(W) x 140(H) x 2(D)mm 31(W) x 140(H) x 4.5(D)mm | Using for height of strike |
| 6. Remote key | 4pcs (Battery CR1620 installed) | |
| 7. Battery | 4pcs (1.5V, "AA" size, LR6 Alkaline) | |
| 8. User Manual | User guide | |
| 9. Installation Template | Using for installation of front Ass'y and back ass'y (To make hole) | |
| 10. Mounting Plate | 77(W) x 87(H) x 3(D)mm | |
| 11. Screw Set | 11pcs (For mounting plate) 2pcs (For front Ass'y) 4pcs (For back Ass'y) | FH T4 X 19 TH M5 X 30 OH M5 X 29 |
| 12. Door thickness | For 40 ~ 50mm | |

(4-1) Dead bolt guider : Should remove after finishing installation.



How to check remained battery capacity How to replace batteries

To check battery remained power



In case it is unlocked status,
open the cover and press

1

~ **Bik**

In backlight light on

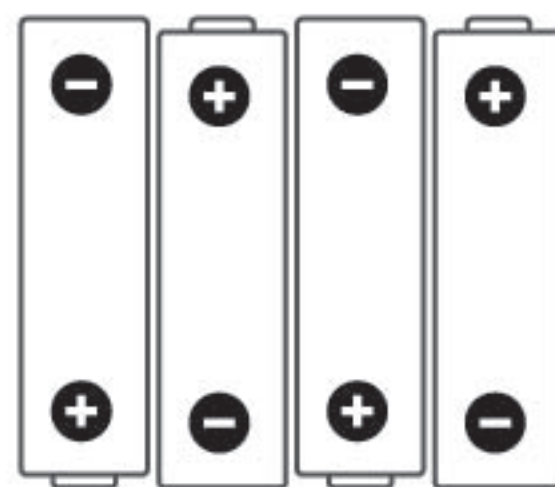
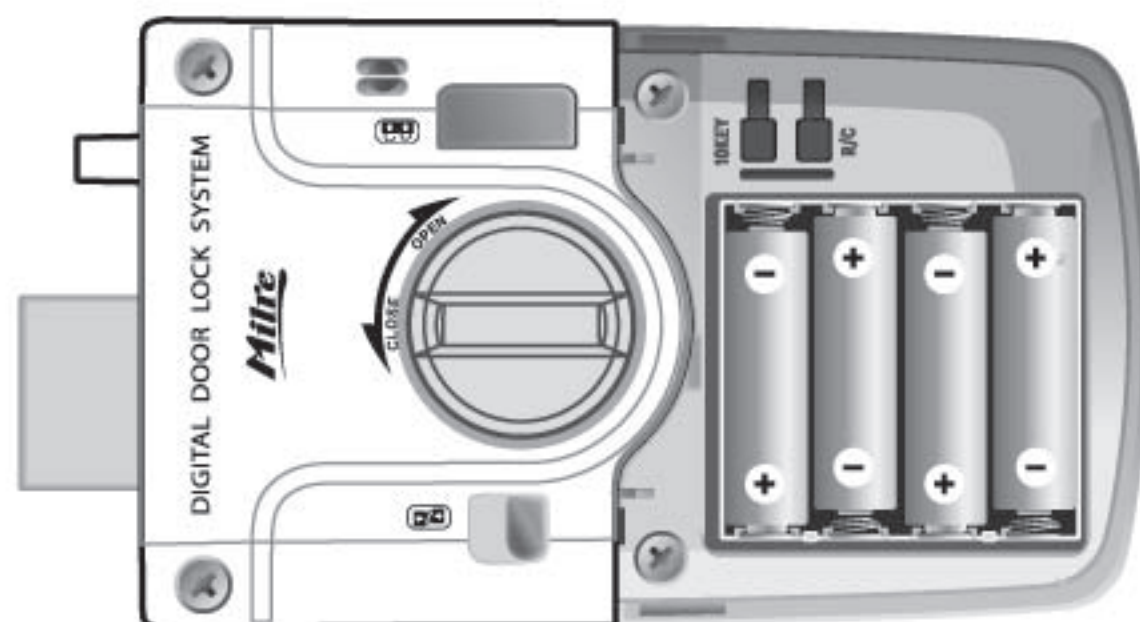


If the backplate is lit on
when you open the cover,

1. Press ***** button

2. And press **1** button

When the indicating lamp is in "orange color" or "red color"
with warning alarm sound, please replace all the batteries immediately.



4pcs (1.5V, "AA" size, LR6 Alkaline)

※ Please insert batteries correctly as above direction.

● How to apply external power in the emergency



※ When the battery is entirely exhausted and door lock is not activated,
please contact 9V (6LF22) battery to emergency power terminal.
Once the door lock is acticated, open the door by secret code
and replace the batteries in back ass'y.

***** → **secret code** → *****

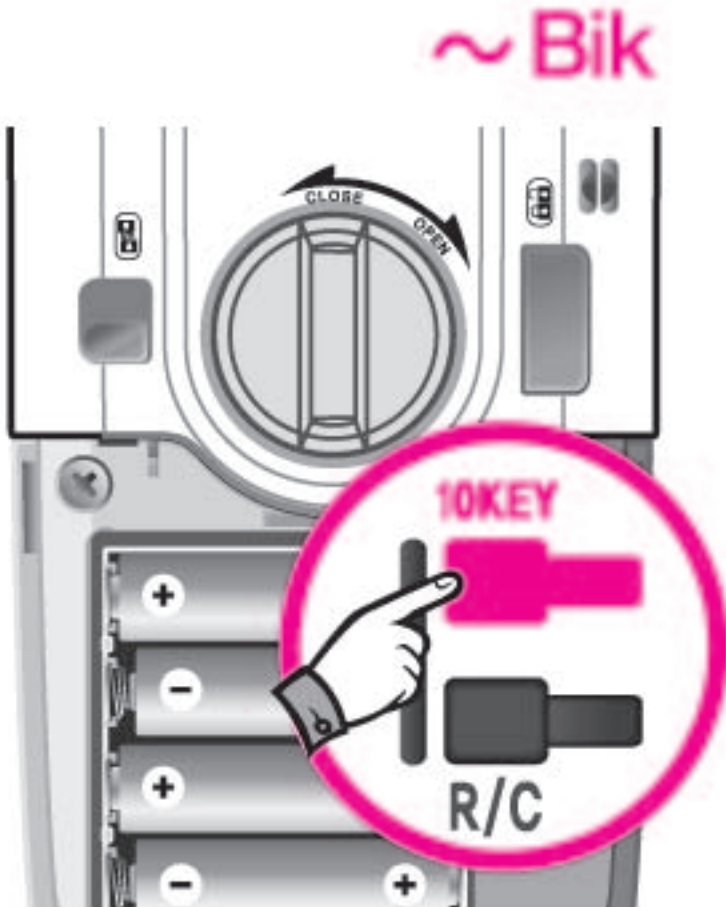
※ Position of polarity is in regardless.



Notes

- If battery indicating lamp is flickering in "red" or "orange" color,
batteries shall be replaced immediately.
- Please use battery of 1.5V, "AA"size, LR6 Alkaline.
- Battery's life-span is around one year with 20 times operation in a day.
- Battery's life is variable as per environment & frequency of operation.


● Register / change secret code




~ Bik

10KEY
R/C

① Open battery cover and press [10key] button shortly.




② Enter new secret code.
(Ex:1234)




~BirikBirik


③ Press * button, then new code is registered with with "brik~brik~" sound.



④ Close the cover then, registration is completed.



- To register multiple secret code, please proceed ① ~ ③ step of above procedure and repeat ② ~ ③ steps for additional secret code.



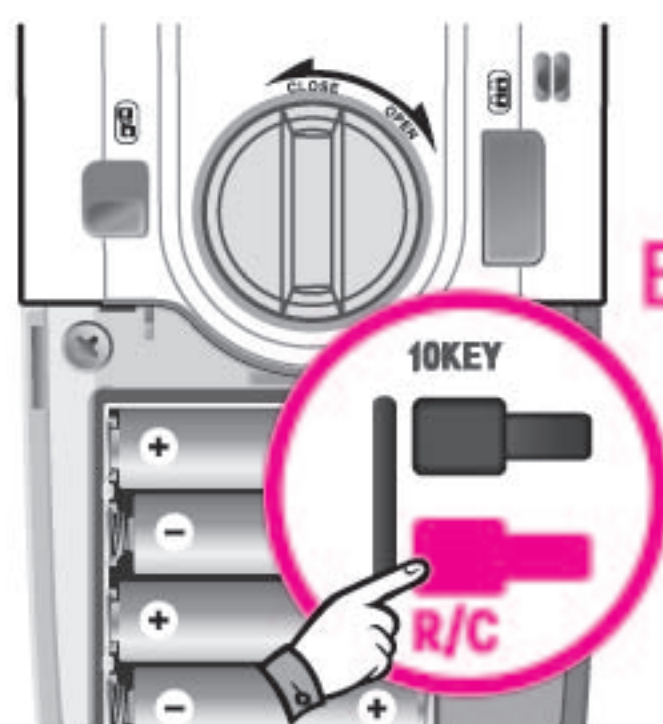
Notes

- Factory setting secret code is '①②③④'.
- When you register new secret code, all the registered secret code are deleted automatically.
- Secret code can be registered from 4 to 12 digits.
- Max. 8 of secret codes can be registered.
- To register multiple secret code, press new secret code and press * button shortly.
- Input new secret code within 10 seconds.
- After changing secret code, please verify it by unlocking with new secret code.

● How to register remote control key

- Max. 10EA of remote control key can be registered.

1. Press R/C button.



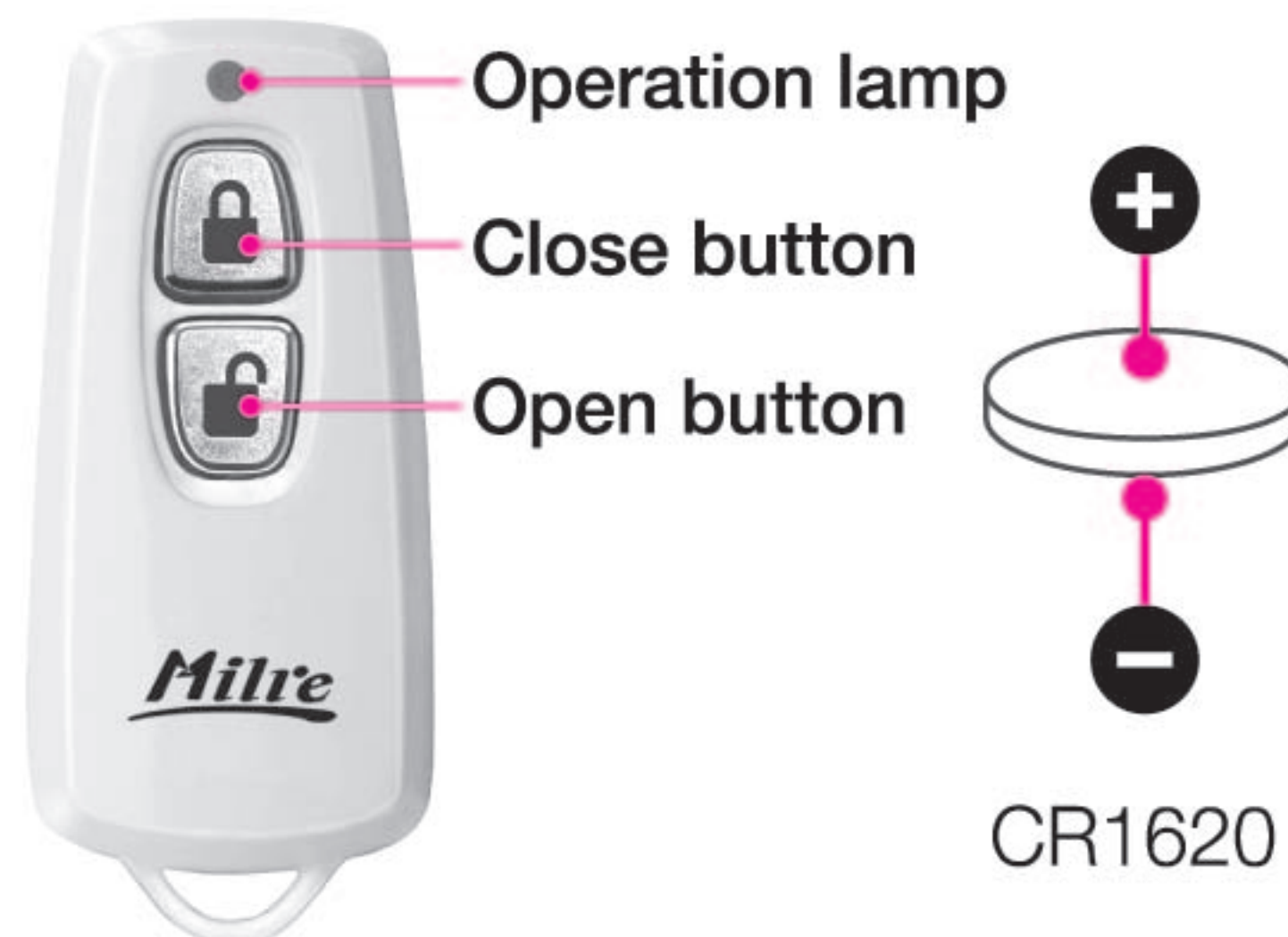
Open the battery cover,
and press R/C button shortly.

2. Registration



Press button, then key
is registered.

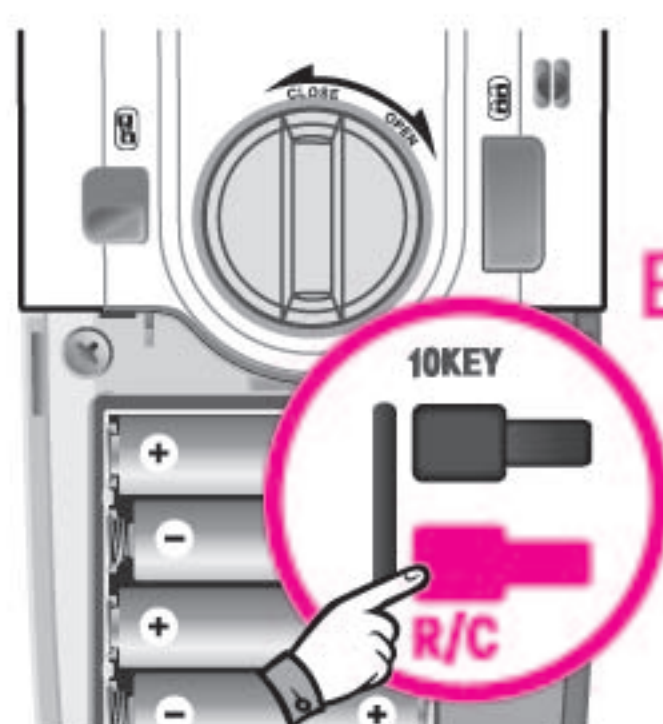
※ Registration of
several keys - Make
sure that lamp on key
is turned off before
proceed next key.



- Round battery (CR1620) is installed.
- To replace battery, open the back cover
by screw driver.

● How to remove remote control key (Delete all)

1. Press R/C button.



Open the battery cover,
and press R/C button shortly.

2. Delete



Press **#** button **for 3 seconds**,
then all the registered remote control key
is deleted.



Notes

- If the operating distance of remote control key is shorten with vague lamp light or not working entirely, please replace the battery of key. (Be care of exact position of +/- .)
- Another radio device can give effecton to operation of remote control key.
- With registration of new remote control key, previous remote control key will be deleted automatically.
- Once the remote control key is operated for more than 1,000 times at the long distance where the key is not available, remote control key is not available any more and there will be warning sound of "Bibibi" with flickering lamp. In this case, remote control key shall be re-registered.

● How to delete all of normal memory

This is function to delete all the registered normal secret code & remote control key.



Open the battery cover,
and press 10 key button & R/C button
at same time **for 3 seconds**,
("Bik Bik~" sound)

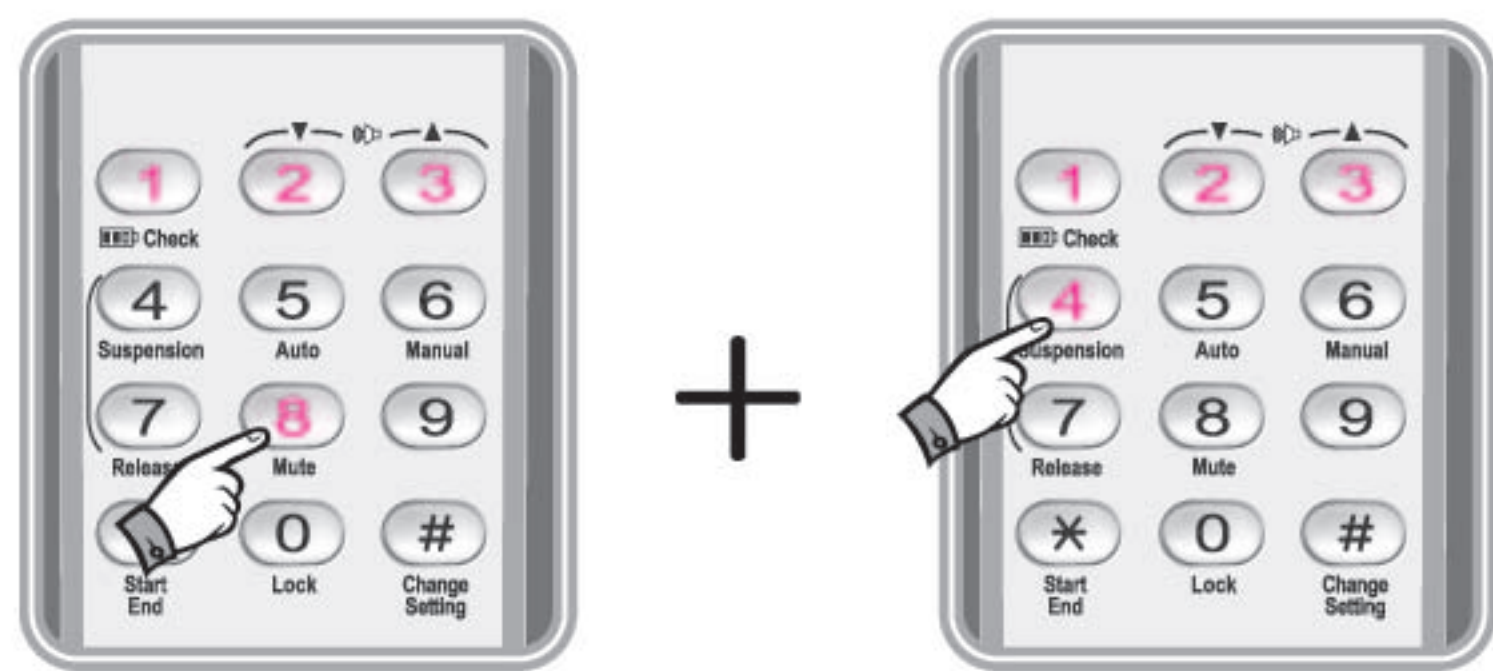
At this point, press **#** in **3sec**,
then, all secret code & remote key
will be deleted.

※ After deleting all secret code & remote key, new secret code or remote key must be registered.

● Random security code function

When you bring friends or another visitor to your home and if you don't want to reveal secret code to them.

You may press any number randomly with no limitation, and then input your registered secret code finally.
Then, you can open the door with no showing your secret code to them.



Random Security Code No

Registered Secret Code No

(ex:1234)

After input any numbers randomly
and enter your secret code,
then door is opened.



Notes

- All the deleted information can not be restored.
- When you use "random security code function", actual secret code shall be followed after random numbers.

● How to open the door from outside (By secret code, remote key & with mute function)

Way 1. Open door by using secret code

Open the cover -> Enter secret code -> Close cover, then door is opened.



Way 2. Open the door by remote key



※ With pressing "Open" button on registered key, red lamp is turned on and door is opened.

 Open the door with the mute function



Way 3. Open the door with the mute function
Press "Mute" button and open the door with secret code or remote control key, then there will be no operating sound.

● To close door from outdoor

1. To lock in AUTO Locking mode

In Case of [Auto Locking] mode,
the door is locked automatically with sounds
~BikBik.



2. To lock in MANUAL Locking mode

In [Manual Locking] mode,
you can lock the door by one of following 3 ways.



1. Close door
-> Mute button press
-> Door is locked




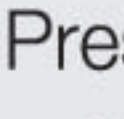
2. Close door
-> keypad 0 button press
-> Door is locked



3. Press "Close button"
of remote control key.

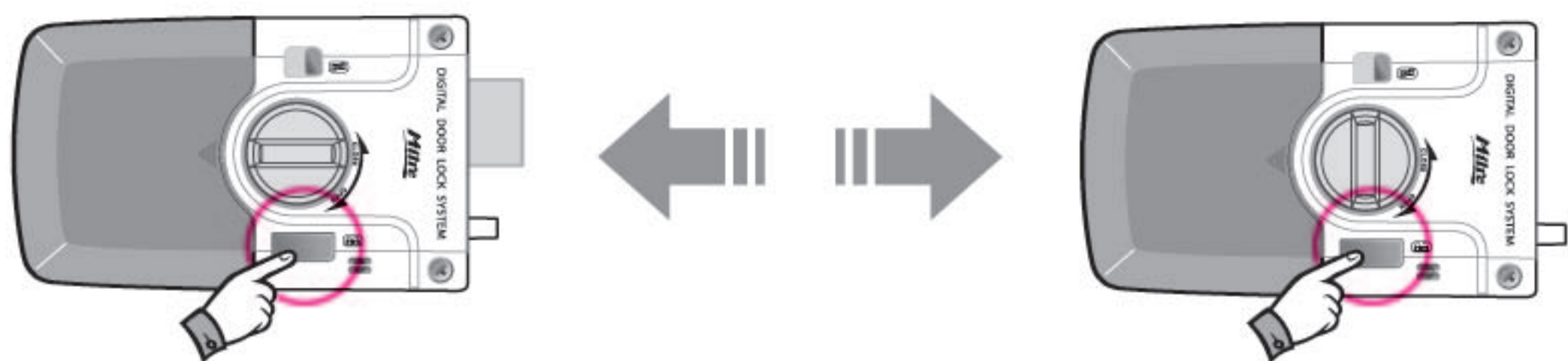


Notes

- When you open the door from the outside, if the cover is opened already but no backlight on numeric plate, press  button and enter the secret code. And close cover, then door is opened.
- And also, from the outside, you can open the door as per following procedure. [Open the cover -> Input secret code -> Press  button -> Door is opened]
- If the wrong number is entered for 5 times, door lock is inactivated for 1 minute with warning alarm sound.
- When the door lock is inactivated with wrong number, press [close/open] button / remote control key button / 10key button or R/C button, then reactivated.
- Even the door is opened status, if you press 0 button, mute button or close button on remote key, door lock will be locked position.

● How to open or close with “One touch button” from inside.

If you press the one touch button(open/close) it is locked or unlocked automatically.



Press in locked status, it will be unlocked. Press in unlocked status, it will be locked.

● How to open or close with “Open knob” from inside.

The door can be locked or unlocked by turning the open knob.



Turn to clockwise, it will be unlocked. Turn to counterclockwise, it will be locked.

mode A→M [Auto/Manual] system setting



press #



enter secret code
(ex:1234)



press #



press 5
Auto Locking System



press 6
Manual Locking System



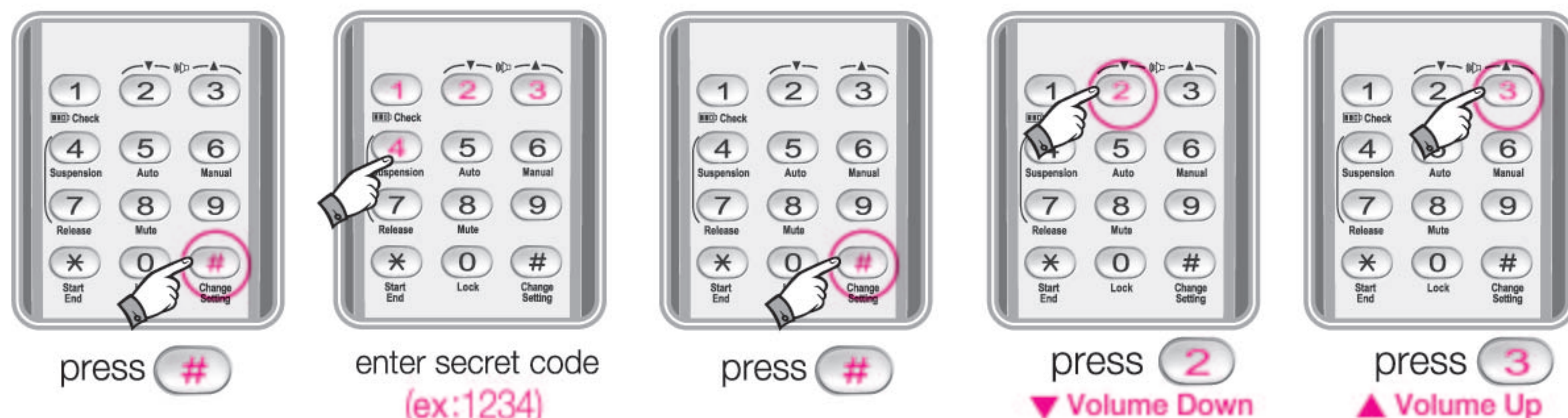
Notes

- Even the door is opened status, door is locked by One touch button.
- AUTO Locking : This is automatic locking function for door when it is closed.
- In case of unregistered secret code, there will be warning alarm sound.
- In [Auto Locking] mode, if you press touch sensor, door is locked too.
- In [Manual Locking] mode, even though you close the door, it keeps unlocked status.



How to control volume of operating sound

Activating Volume could be controlled from mute to Max, 8 level by user's control.



reference



Indicating Color For Volume level (Total 8 Levels)

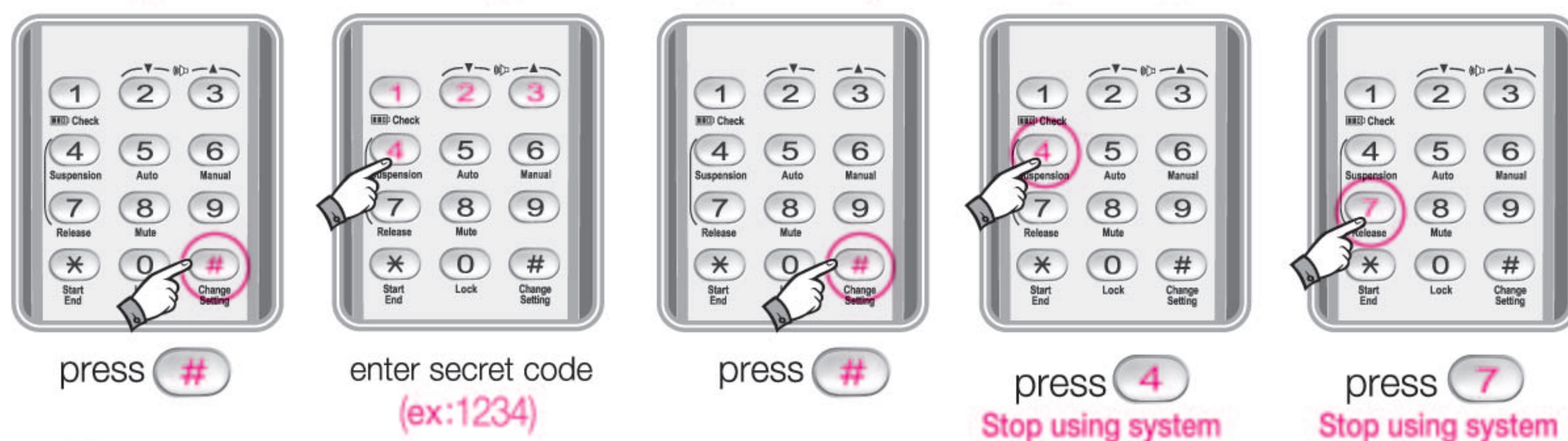
Mute : Red red orange yellow green blue dark blue violet white Max volume : White
(8 level)

※ Press 1 For maximum volume level, Press 0 For mute.



How to suspend or release “One touch button” [Guide for security device of Auto Lock/Unlock button]

(User's manual of (Auto Lock/Unlock) button system)



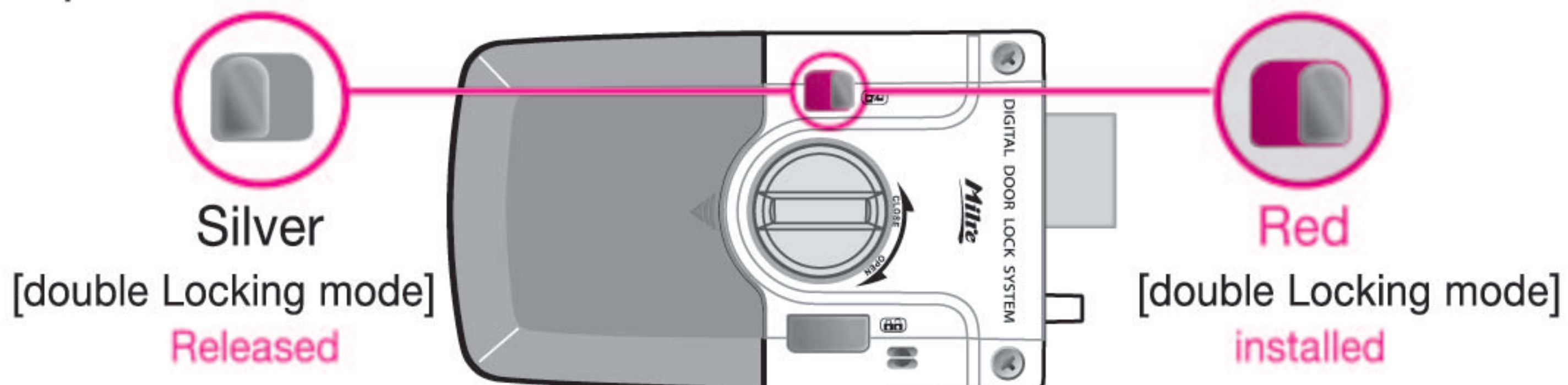
Notes

- While activating volume in mute, alarm sounds max level still which is occurred by fire detected, intrusion, mis-entering secret code / digital key at 5 times.
- “Auto Lock/Unlock System Install” means stop using of (open/close) button no more.
- When “Stop” mode, in case of pressing [open/close] button, it sounds alarm.
- While the door is unlocked, if you “Stop” mode, the door is locked automatically.
- If you open door with registered secret code / remote key, “Stop” mode is released automatically.



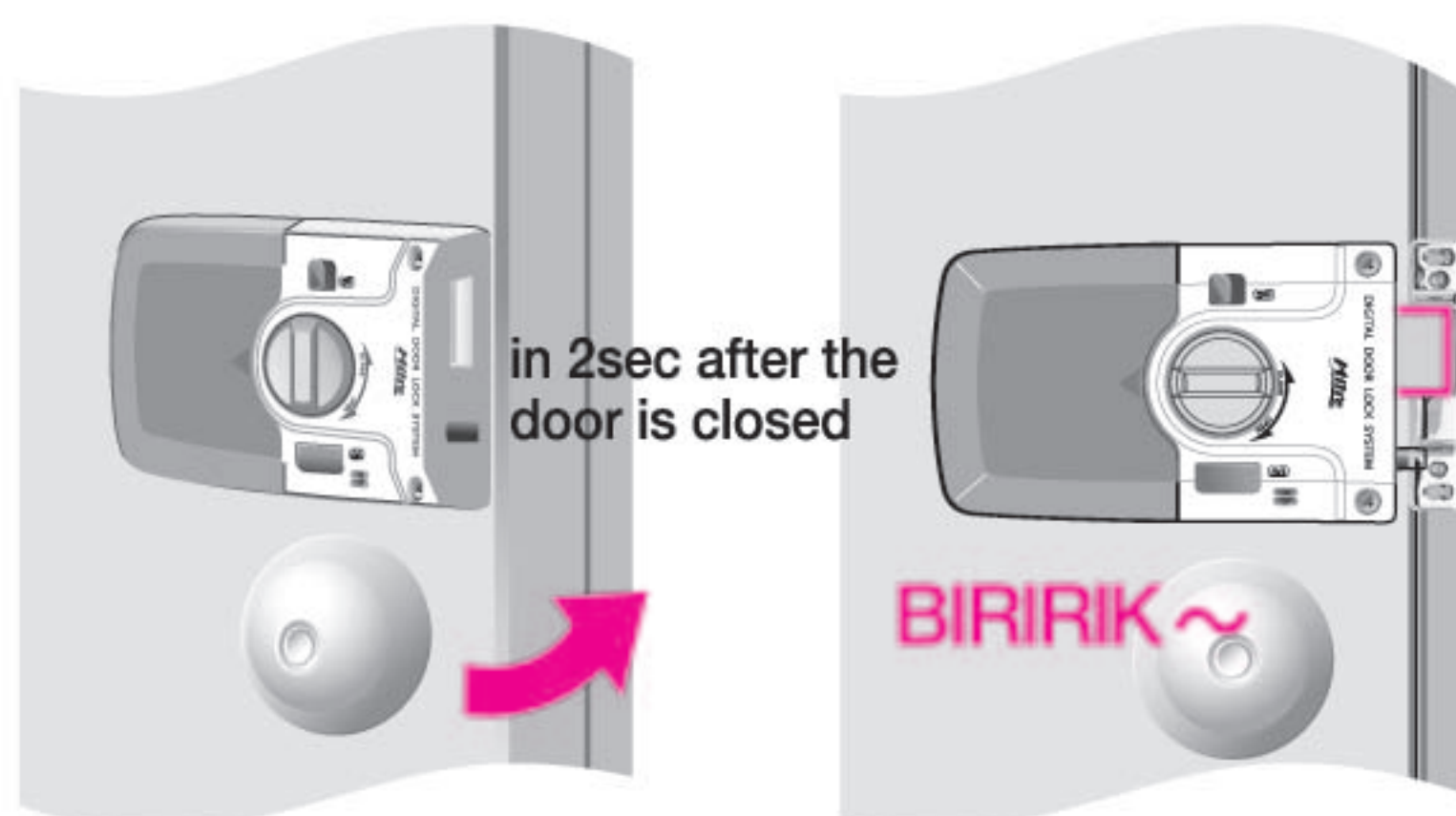
How to use [Double locking] system

In [double Locking mode], function of door lock is suspended and can't open the door from outside.



Auto Locking Function

Being installed, it is locked automatically when the door closed.



[Auto/Manual] Locking function provides you more convenience
(Refer to page 10 for setting this function).



Auto Relocking Function

In 7sec after releasing locking mode, the lock is relocked automatically.



If you do not open the door within 7 seconds after unlocking with secret code or remote key, it will be relocked automatically.



Notes

- In [Double Locking] mode, the lock could not be released from outdoor with secret code or digital key.
- In [Double Locking] mode, from indoor you can release lock by the use of (Manual Open/Close) Knob
- Intrusion alarm function still activating while [Double Locking] mode.
- When volume set "mute" level, indicating lamp of [Double Locking] mode is flickering only without sounds.
- Even if the door is opened, [Double Locking] mode can be installed.
- If you open the door by "Open knob", Auto relocking is not operated.
- Even if [Auto/Manual Locking] mode turn to [Manual locking, Auto Relocking] mode still be activating.
- Auto Relocking function separate from [Auto/Manual] locking function.
In 7sec after when you release lock without opening the door, the door is relocked automatically.



Warning function against mischief or hacking

If wrong secret code is entered over 5 times, alarm system is activated with warning sound and all the function of door lock is suspended for one minutes.



BIYOONG~ BIYOONG~

Enter wrong secret code for 5 times

After alarm sound, it's system full down for 1 min.



Warning system against trespassing by force

Once the door is locked, alarm system is acticated in 5 seconds.
If there is any trying of trespassing by force, it is warning with strong alarm sound.



Fire detection system

BIYOONG~
BIYOONG~



When it occurs fire or detects high temperature (over 60 degree), fire and temperature detecting sensor activated.
Then locking system is released automatically with alarm sounds (Fire detecting sensor's activating degree is about 60degree. In the mean time, it might be a difference depends on circumstances.)



Notes

- In case warning function against mischief/hacking is activated, it can be released by [Lock/Open] button, remote key, [10key] or [R/C] button.
- Tresspassing warning alarm or fire detection alarm is activated, it can be released by secret code.
- Once the fire detecting alarm system is activated, its function can be restored after the temperature of sensor is downed to under 40 degree.

产品特点



采用双重(TWO WAY)开启方式

除密码外，还配有携带式遥控器，即使即记性不佳的小孩或老弱者均可方便使用。最多可以注册8组密码和10个遥控器，方便大家庭及办公室使用。(遥控器可以另外购买)



虚数密码功能

与他人同行入户时，先任意按几个数字键(虚数)，然后输入正确的密码开锁。这种无限虚数密码系统的安装，更进一步强化了密码保护功能。



静音功能

应时清除产品操作时所发出的音量，安静开门，以防止打扰他人。



操作音调解功能

产品的操作音从静音至最大音量之间可调节8个阶段，用户可以按照需求自由调节音量。



多种颜色的产品操作显示功能

为了让用户容易识别产品的操作状态，以8种灯光颜色显示其状态。



自动锁定/自动重锁功能

防止顾客没有锁门就外出或已开锁后没有开门时，启动[自动锁定]或[自动重锁]功能，可以防止未关门导致的意外事故。



[反锁]功能及非法进入紧急报警功能

产品设置为[反锁]状态下，从外部无法开锁。如果强制性破坏门并试图进入时，将发出警报音。



电池余量确认及更换电池提示功能

具有电池余量确认功能，如需要更换电池时，将发出警告音和灯光提示。



电池余量确认及更换电池



电池余量确认

在开门状态下，拉开滑盖后按 **1** 键。

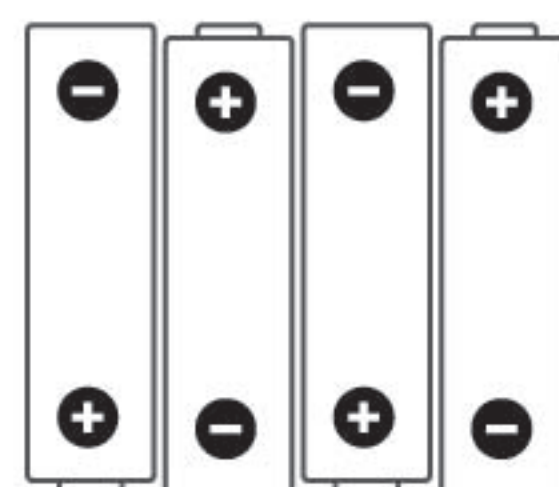
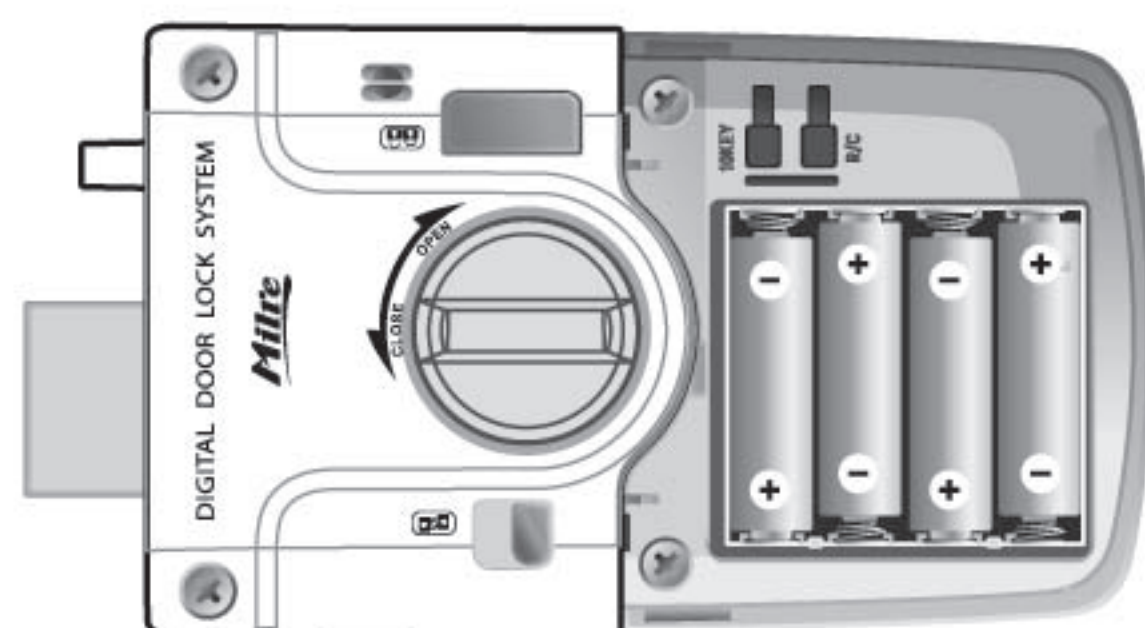
~ 嘀



背景灯亮灯时

如拉开滑盖并背景灯亮灯时，先按 ***** 键后再按 **1** 键。

在室外体上的电池余量显示灯闪烁**橙/红灯**并发出电池更换警告音时，请立即更换电池。



请立即更换全部电池。
“AA”型号 X 4节
（“碱性电池”LR6）

※ 请按图示插入新电池。

● 外部应急电源使用方法



※ 先拉开滑盖，将9V四角电池（6LF22）接触在外部应急电源供给端头后，按密码。

按 ***** → 按密码 → 按 *****

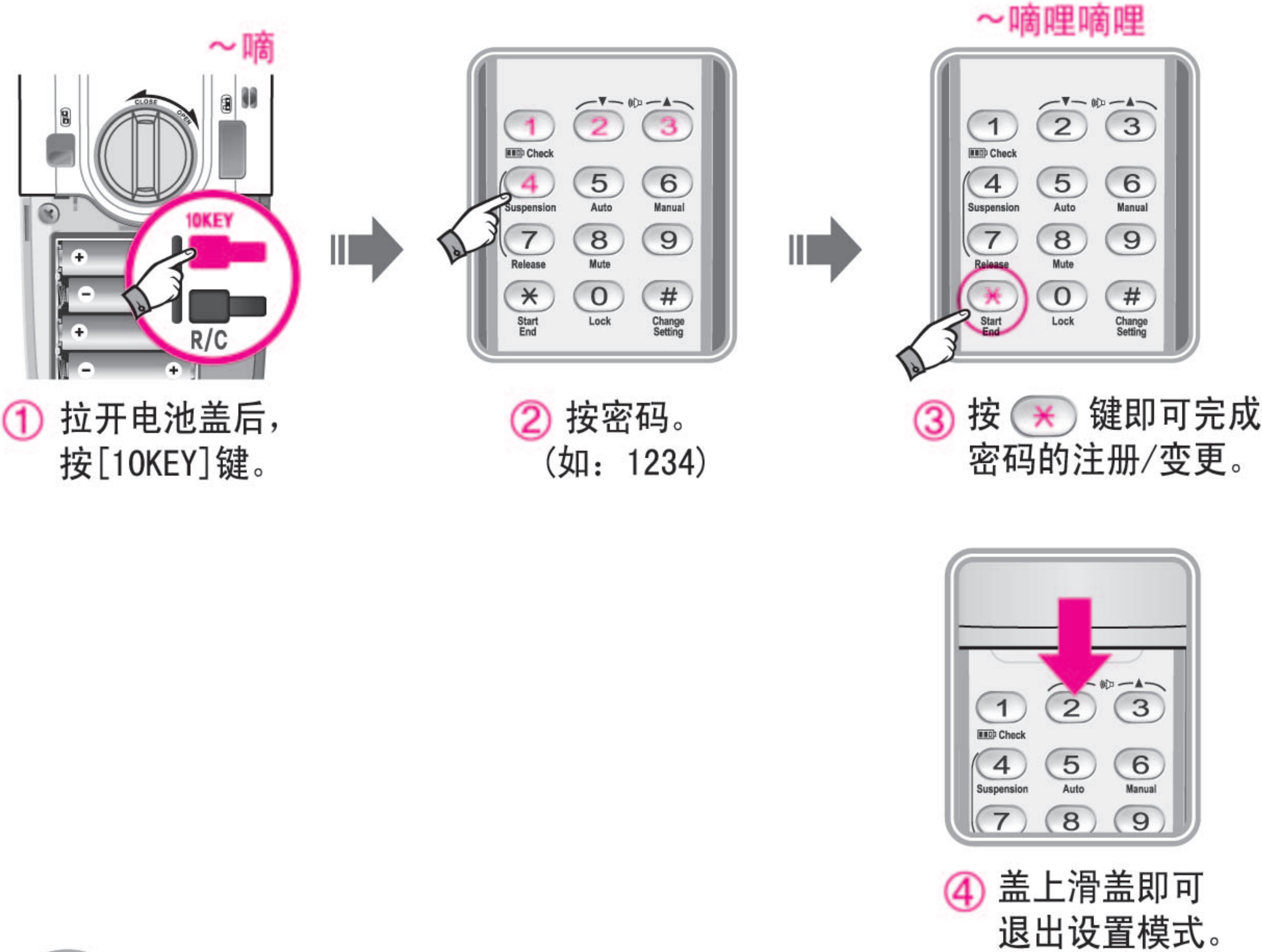
※ 外部应急电源供给端头是无极性。



须知事项

- 电池余量显示灯闪烁橙/红灯时，请立即更换电池。
- 必须使用碱性电池。（“AA” LR6/1.5V）
- 电池寿命为**每日使用20次标准约为一年**。
- 电池寿命根据使用环境及使用次数有所不同。

● 密码的注册及变更



• 如果想连续注册一个以上密码，首先进行上述 ①~③ 项，然后反复 ②~③ 项即可连续注册。

须知事项

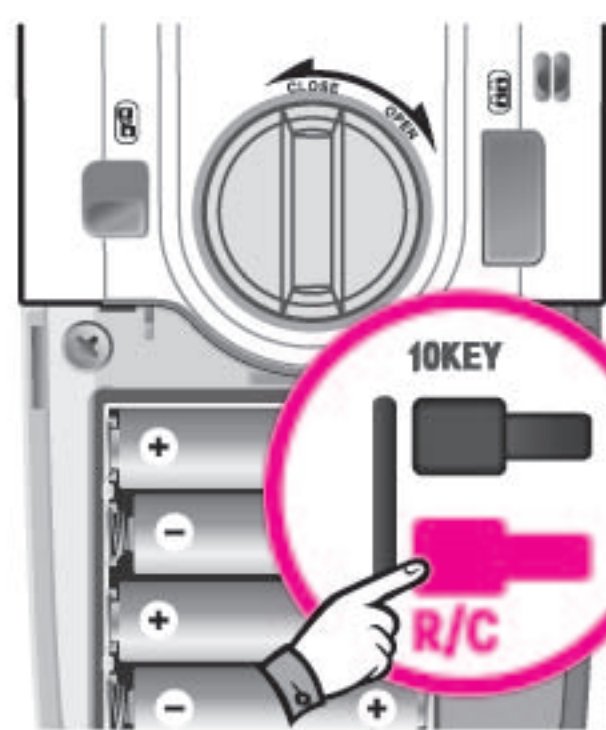
- 产品出厂密码为 '①②③④'。
- 注册新密码后将自动删除已注册的密码。
- 密码可设置为4~12位数。
- 可以注册8组密码。
- 如果想连续注册一个以上密码，按新密码再按 * 键的顺序连续按键即可。
- 必须在10秒内按键。
- 如丢失密码或遥控器时，将无法开锁，只能破损产品。

其它事项

遥控器注册方法

- 遥控器最多可注册10个。

1. 按[R/C]键



拉开电池盖后，
按[R/C]键。

2. 注册



按遥控器的[开锁]
键即可注册。

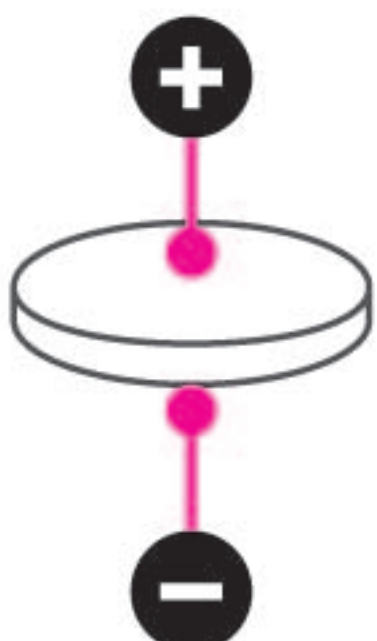
※连续注册一个以上的遥控器时，
在先注册的遥控器运作显示灯
灭灯后再按其他遥控器的[开锁]键。



运作显示灯

[开锁]键

[锁定]键

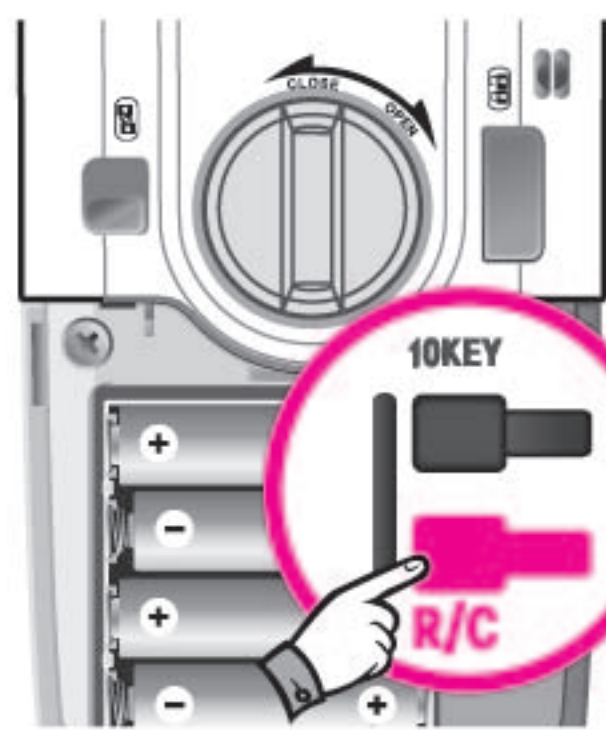


CR1620

- 遥控器内装有钮扣电池 CR1620。
- 拧开后面的螺丝钉，可以更换电池。

遥控器删除方法（全部删除）

1. 按[R/C]键



拉开电池盖后，
按[R/C]键。

2. 删除



再按 **#** 键**3秒**时，可以删除
所有已注册的遥控器。



须知事项

- 运作显示灯变得模糊并运作距离变短或不运作时，请立即更换电池。
(请注意电池正负极)
- 遥控器是用电波的无线设备，如受到其它无线设备的干扰，会出现运作异常的现象。
- 注册新的遥控器后将自动删除已注册的遥控器。
- 如果注册遥控器后，在主机无法接收信号的场所使用遥控器1,000次以上，则不能开锁，
运作显示灯闪烁的同时将会发出“嘀嘀嘀”警报音。请重新注册后使用。

● 全部删除功能

具有一般密码和遥控器同时删除的功能。



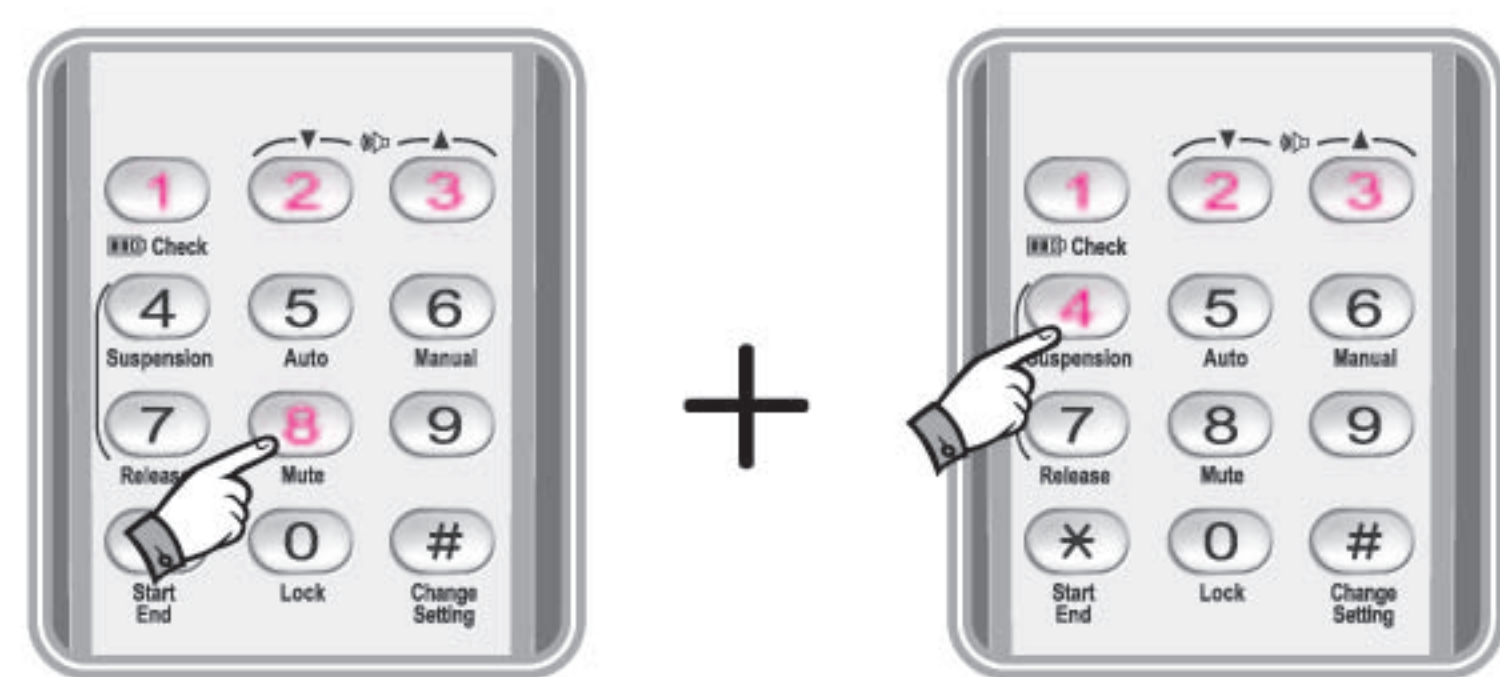
拉开电池盖后，同时按
[10KEY]和[R/C]键**3秒**。

这时按 **#** 键**3秒**，则
可以删除已注册的
一般密码和遥控器。

※ 在不是管理者密码模式状态下，如果全部删除后没有设置新密码或重新注册遥控器，将无法锁定或开锁。

● [虚数密码]功能使用方法

与他人同行入户时，先任意按几个数字键(虚数)，然后输入正确的密码开锁。
这种无限虚数密码系统的安装，更进一步强化了密码保护功能。



按虚数

按密码
(如: 1234)

任意按几个数字键(虚数)后，
输入正确的密码开锁。

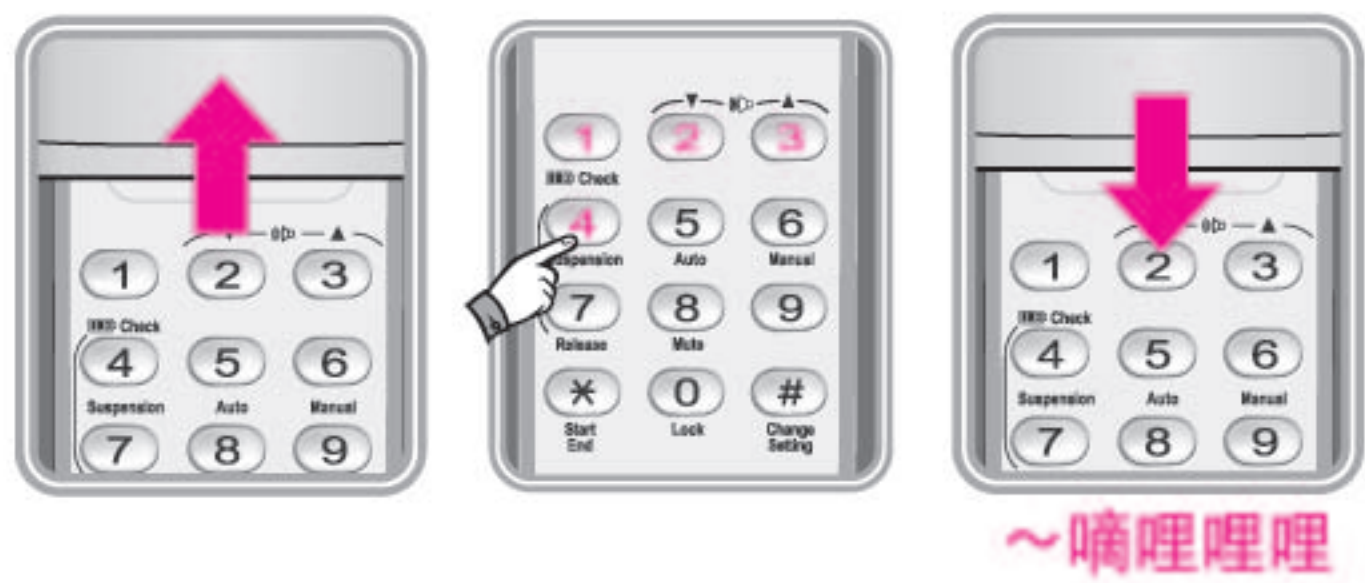


须知事项

- 电池余量显示灯闪烁橙/红灯时，请立即更换电池。
- 使用[虚数密码]功能时，最后要输入正确密码后才能开锁。

●从外部开锁（密码，遥控器，静音功能）

方法1. 拉开滑盖并按已注册的密码后盖上滑盖。



~嘀哩哩哩

方法2. 按遥控器的[开锁]键。



※ 按遥控器的[开锁]键：则将闪烁运作显示灯并即可开锁。

静音模式开锁



方法3. 先按[静音]键后，再用方法1或方法2开锁，则可以清除操作音。


●从外部锁定

1. [自动锁定]设置下锁定

如果在[自动锁定]设置下关门时，发出“嘀嘀~”声的同时即可自动锁定。




2. [手动锁定]设置下锁定

如果在[手动锁定]设置下，关门后按静音键 , 则即可锁定。



方法1.
按[静音]键
即可锁定。





方法2.
按  键即可锁定。



方法3.
按遥控器的[锁定]
键即可锁定。

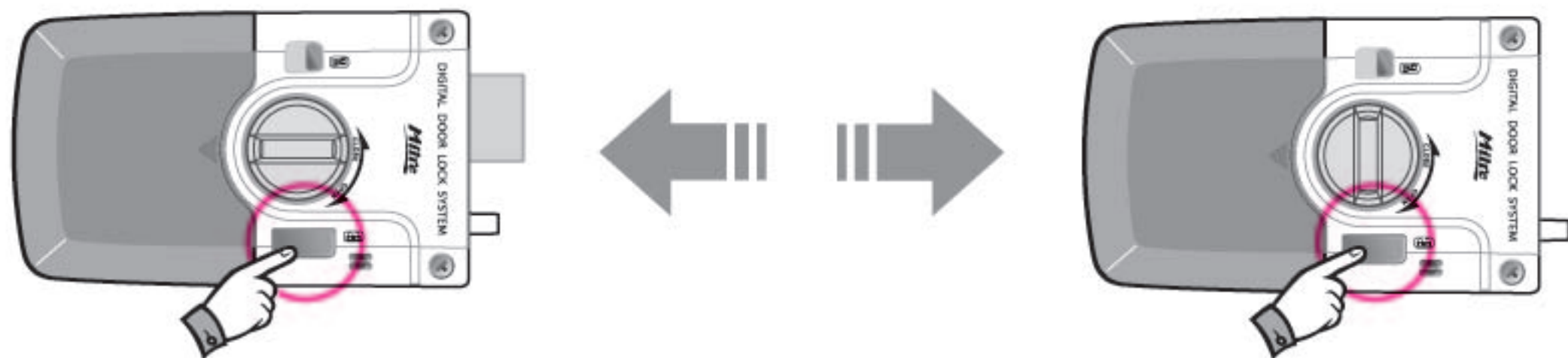


须知事项

- 从外部开锁，如果拉开滑盖时背景灯不亮，则先按  键，再按密码，盖上滑盖即可。
- 从外部开锁，按密码并盖上滑盖之前按  键也可以开锁。
- 连续输错5次密码时，将发出防骚扰及防密码破解警报音，同时将停止1分钟的功能运作。
- 停止1分钟的功能运作时，按[锁定/开锁]键或[遥控器]键或[10KEY]键或[R/C]键，即可恢复正常运作状态。
- 用[0]键或[静音]键锁定时，即使是开门状态下也会锁定。

● 从内部操作[锁定/开锁]键(自动)

按室内侧的[锁定/开锁]键即可锁定或开锁。

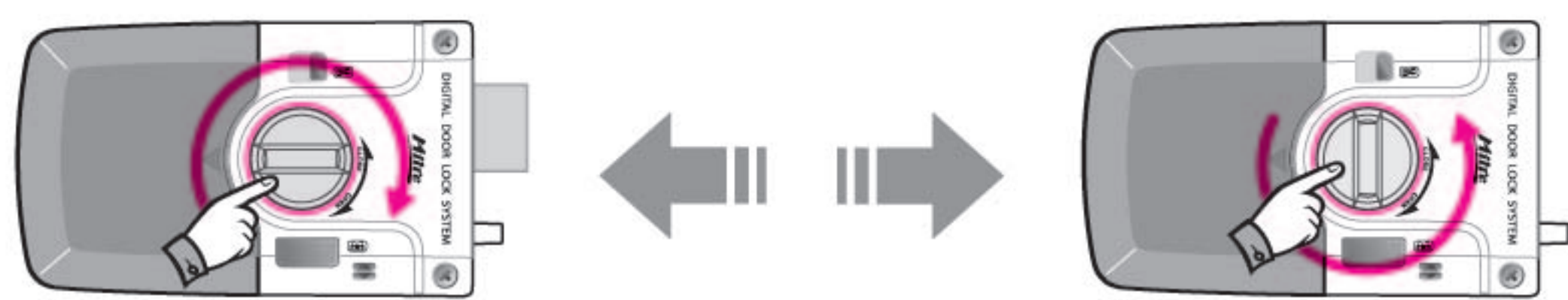


如果锁定时按此键，则可以开锁。

如果未锁定时按此键，则可以锁定。

● 从内部操作[手动开闭装置](手动)

用手旋转室内侧的[手动开闭装置]时，即可开锁或锁定。



按顺时针方向旋转，即可开锁。

按逆时针方向旋转，即可锁定。

mode A-M [自动/手动]锁定功能设置



先按 # 键



按密码。
(如：1234)



按 # 键后



5 为
[自动锁定]设置



6 为
[手动锁定]设置



须知事项

- 使用[锁定/开锁]键锁定时，即使在开门状态下也会锁定。
- [自动锁定]是指关门状态下，产品将自动锁定的功能。
- 如果输错密码时，将发出警报音。
- 锁定方式设置为[自动锁定]后，如果用手按住[开闭感应传感器]时也可以锁定。
- 锁定方式设置为[手动锁定]后，即使关门也不会锁定，保持常开状态。

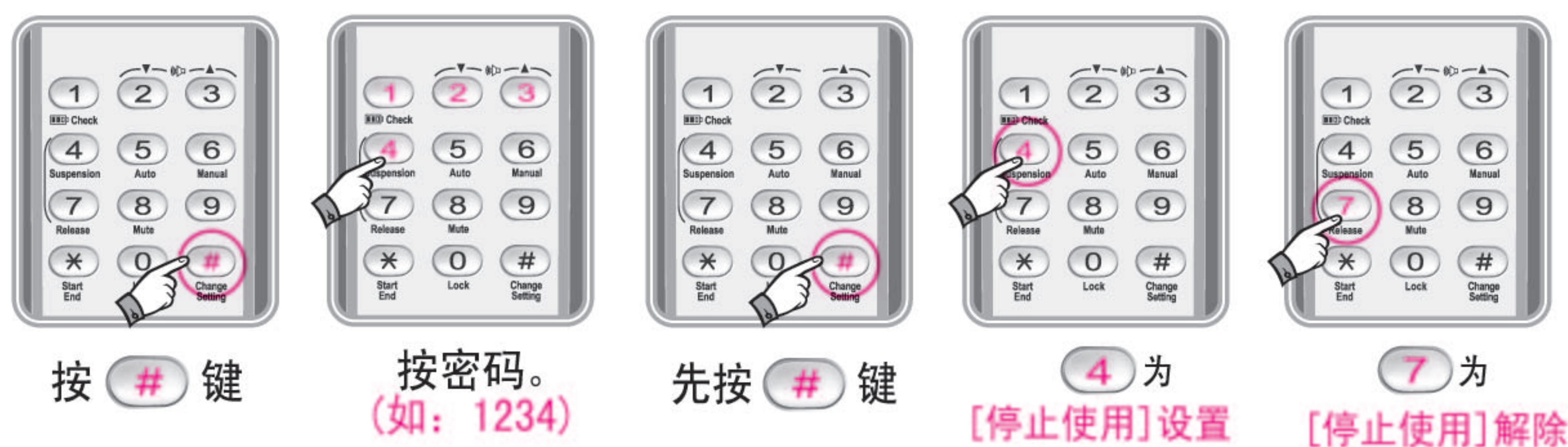
操作音量调节

产品的操作音从静音至最大音量之间可调节8个阶段。



※ **1** 为[音量最大]设置, **0** 为[静音]设置。

[锁定/开锁]键的[停止使用]功能设置/解除

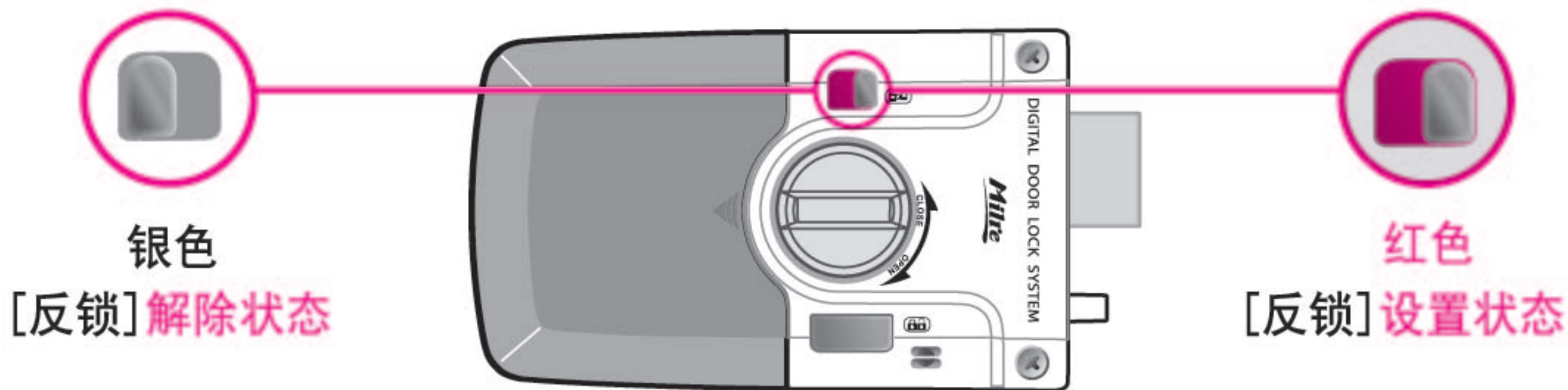


须知事项

- 即使设置为[静音], 也会发出各种警报音。
- [锁定/开锁]键的[停止使用]功能是指为了防止通过物品投递口开锁并试图侵入行为而设置的功能。
- 如果设置为[停止使用]功能后按[锁定/开锁]键时, 将发出[停止使用]设置提示音。
- 如果在开锁状态下, 设置为[停止使用]功能时, 产品将自动锁定。
- 如用密码或数码钥匙开锁时, [锁定/开锁]键的[停止使用]功能设置将自动解除。

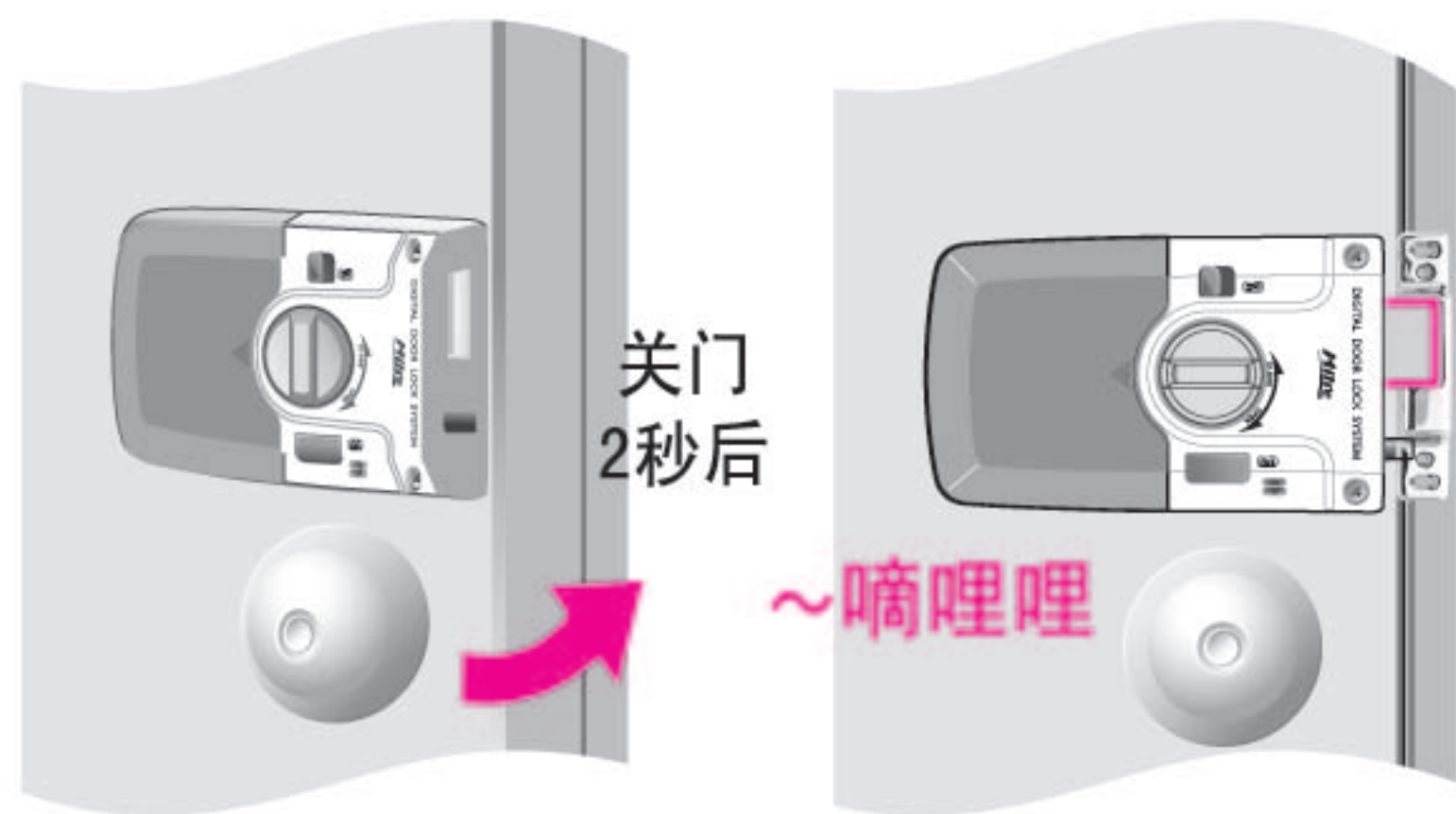
[反锁]功能使用方法

产品设置为[反锁]状态下，从外部无法开锁。
(将停止产品的正常运作)



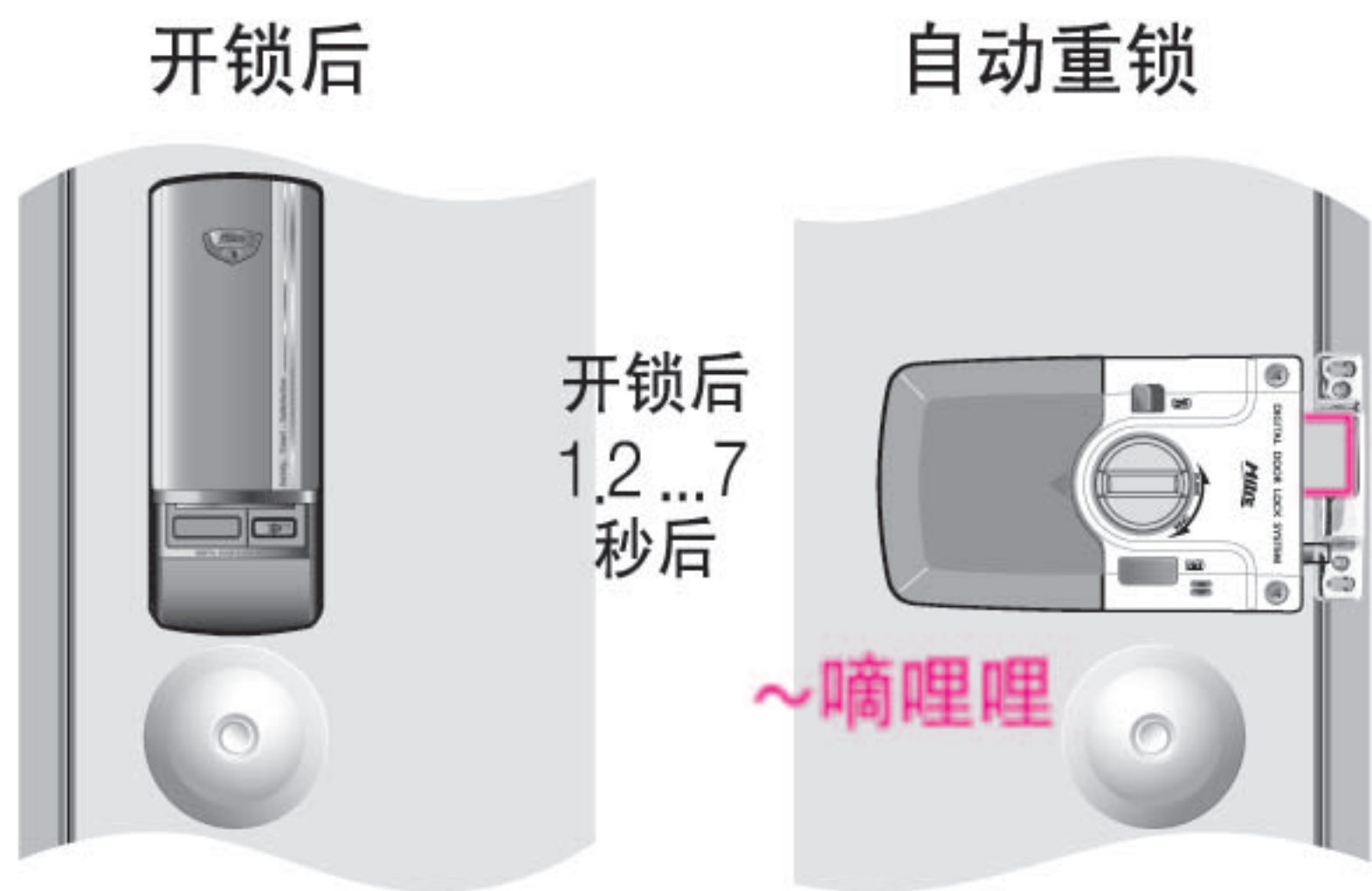
[自动锁定]功能

[自动锁定]是指关门状态下，
产品将自动锁定的功能。



[如果设置为[自动锁定]，
则关门时产品将自动锁定。

[自动重锁]功能



如果用密码或数码钥匙开锁后，
在7秒内不开门时，将自动重锁，
以保护用户财产。



Notes

- [反锁]设置下，]如按[锁定/开锁]键，将发出[反锁]设置提示音。
- 产品设置为[反锁]状态下，不可用密码或数码钥匙开锁。
- 即使是[反锁]设置，也可以通过旋转[手动开闭装置]的方式开锁。
- 在[反锁]设置下，非法进入紧急报警功能依然生效。
- 设置为[静音]后，[反锁]设置提示音是静音状态，只闪烁灯光。
- 即使产品是未锁定状态，但依然可设置[反锁]功能。
- 如果用手旋转室内侧的[手动开闭装置]开锁，则不能自动重锁。
- 即使设置为[手动锁定]，[自动重锁]功能依然有效。必须开门一次，才会保持常开状态。
- [自动重锁]和[自动/手动]锁定是不同的功能。如果开锁后，在7秒内不开门时，将自动重锁。

防骚扰及防密码破解警报功能

连续输错5次密码或连续接触未注册的数码钥匙5次时，将启动防骚扰及防密码破解警报功能并发出警报音，同时将停止1分钟的功能运作。



输错密码5次

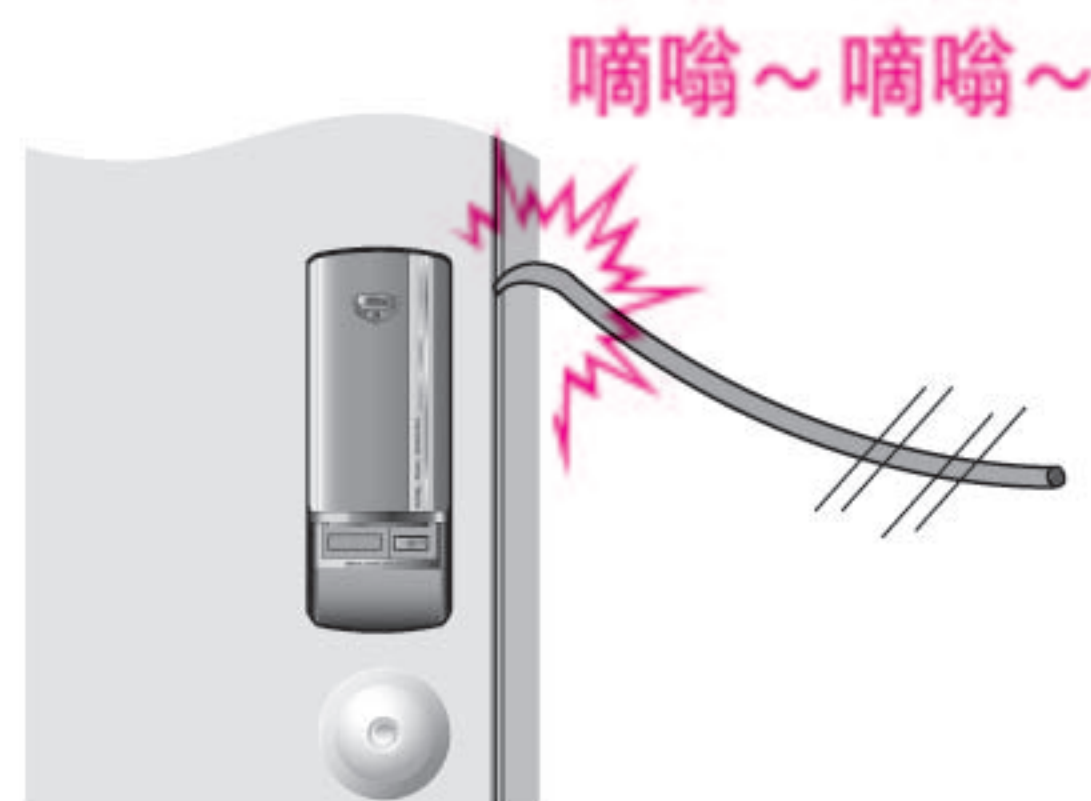


警报音后，将停止1分钟的功能运作

非法进入紧急报警功能

关门并产品处于锁定状态下，经5秒后将启动非法进入监控功能。

在监控功能启动中，如果门处于异常开锁状态，将发出2分钟的警报音。



火灾感应安全系统

嘀嗒~ 嘀嗒~



发生火灾或高温时，自动解除锁定状态。

发生火灾或高温时，火灾感应传感器将启动并发出火灾警报音，并自动解除锁定状态。

(火灾感应温度约为60℃左右，但根据周围环境有所不同。)



须知事项

- 防骚扰及防密码破解警报功能启动后至自动解除，需要等一分钟。
- 产品功能处于停止状态下，按[锁定/开锁]键或[遥控器]键或[10KEY]键或[R/C]键，可以解除停止状态。
- 火灾警报音和非法进入警报音将发出2分钟。
- 发出非法进入警报音时，如用密码解除警报音，则即可恢复正常运作状态。
- 发出火灾警报音时，如用密码解除警报音，则即可恢复正常运作状态。
- 发出火灾警报音并解除后，产品温度必须降至40℃以下，才恢复火灾感应功能。



Product Warranty



⌘ The warranty period shall be one year from the date of installation. (for agency)

| | | | | | | |
|----------|--|-----------|-----------|---------------|-------|--|
| Model | | Serial No | | Purchase Date | . . . | |
| Customer | | | Address | | | |
| Phone | | | | | | |
| Agency | | | Installer | | Phone | |

- ⌘ Please keep this warranty for your after-sales service. You may have to pay for the service if you fail to present the warranty.
- ⌘ Failure to fill out form fields such as purchase date may void warranty.
- ⌘ The product may not be regarded as genuine, if no serial number is described on the warranty.



产品质量保证书



⌘ 产品保证期为自安装日起一年。

| | | | | | | |
|------|--|-----|-----|----------------|-------|--|
| 型 号 | | 编 号 | | 安装日期 (购买日期) | . . . | |
| 顾客姓名 | | | 地 址 | | | |
| 电 话 | | | | | | |
| 销售单位 | | | 负责人 | | 电 话 | |

- ⌘ 请妥善保管产品质量保证书。在售后服务时，必须出示产品质量保证书，否则按自费维修处理。
- ⌘ 必须填写保证书内的安装日期及销售单位(负责人)的详细内容。否则按自费维修处理。
- ⌘ 如无产品编号时，视为非正品，因此按自费维修处理。

备忘录 (MEMO)



产品质量保证书



⊗ 产品保证期为自安装日起一年。

| | | | | | | |
|------|--|-----|-----|----------------|----------|--|
| 型 号 | | 编 号 | | 安装日期 (购买日期) | 20 . . . | |
| 顾客姓名 | | | 地 址 | | | |
| 电 话 | | | | | | |
| 销售单位 | | | 负责人 | | 电 话 | |

- ⊗ 请妥善保管产品质量保证书。在售后服务时，必须出示产品质量保证书，否则按自费维修处理。
- ⊗ 必须填写保证书内的安装日期及销售单位(负责人)的详细内容。否则按自费维修处理。
- ⊗ 如无产品编号时，视为非正品，因此按自费维修处理。



销 售 单 位



⊗ 在产品使用过程中，如发生故障时，请与销售单位联系。



CAUTION

Wrong usage may cause damage on parts of dead lock system.
User have to be fully aware of how to operate this product.
Read user manual carefully before using.

- Power : DC6V
- If the batteries are discharged entirely, please replace all the batteries immediately to new one.
- Do not insert the used batteries together with new batteries.
- Keep correct position when you insert batteries.

Address : 9F, #201, Chunui-Technopark II, 202, Chunui-Dong, Wonmi-Gu, Bucheon-Si, Kyeonggi-Do, Korea (420-857)
Tel. : 82-31-623-0341 Fax : 82-32-623-0340
E-mail : sales@milre.com

Rev.01