



**Random security
coding function!**

The best in a Digital World
TOUCHPAD DIGITAL DOOR LOCK
MI-400S
USER'S MANUAL



● Card - 2EA

⚠ Caution!

As this is a keyless digital dead lock, damage may occur to parts of the dead lock system if is not used according to the manual. Users should be fully aware of the manual and how operate this product.

- This manual may change without notice in case of product improvement.
- Product specifications are subject to change without prior notice.
- This manual may not be edited or changed without the manufacturer's prior permission.

Product Features



Two-way Lock / Unlock System

2 way key solution (Max. 8EA of secret code & Max. 20EA of card) is providing convenience for children or elderly people.



Random Security Coding Function

When you enter your home with friends of other people, you don't want to show secret code to them. In this case, you may press any number randomly without limitation and then enter your secret code at final. Then, you can open the door without revealing your secret code.



One Touch Mute Function

You can open the door with no operating sound not to disturb your neighbor.



Sound Control by 8 levels

Operating sound volume can be controlled by 8 level.



Auto Lock / Auto Re-Lock Function

Auto lock : When the door is closed, it is locked automatically. It prevent from any mistake to forget locking the door.

Auto re-lock : When the door is not locked during over 10 seconds after unlocking by secret code, door lock is relocked automatically.



Double Lock System / Intrusion Warning Function

When you set double lock position (red color), the door lock can not be opened from outside by whatever solutions even enter registered secret code or registered remote key.

When trespassers try to open the front door by forcing it from outside or removing the deadbolt, the crime prevention sensor to be activated automatically with a strong warning alarm sound for your safety and comfort.



Check Battery Capacity & Low Battery Warning Function

It is each to check battery capacity with indicating function for remained battery capacity in 3 levels. And when the battery is low, it is indicating it by warning alarm sound & lamp.



Random Security Coding Function

If anyone tries hacking through the combination of secret code for the purpose of mischief or breaking in, it generates alarm sound and block input for a specific time with recognizing non-registered secret code or card key over 5 successive times.

Safety Caution



Do not disassemble or alter the lock. Assembling or disassembling the door lock may damage the product. Damages to the product caused by unauthorized persons may result in damages to your property. Please contact our Customer Service.



If the product generates harmful gases or smoke, please remove the batteries immediately from the product. If you do not take this step immediately, the product may suffer severe damage.



Please keep the product away from water or any liquids. If the product is exposed to salty water or liquids, please wipe off the moisture with a soft cloth. If moisture or foreign materials penetrate the product, remove the batteries immediately and contact the Service Agency or Customer Service Center for advice. Using a product contaminated with foreign materials may cause problems.



Please check the batteries every 6 months to see if the batteries are leaking and to check the cleanliness of battery terminals. If leakage is discovered, please wipe out with a dry cloth and replace the new batteries. In case of exposure to leakage, wash with soap and water immediately.



Do not clean the product with flammable materials such as alcohol, benzene or thinners. Such materials may damage the surface or cause a fire.



Batteries should not be exposed directly to heat sources or flames, or submerged in water, because they may leak or explode, resulting in severe damage. Please do not use damaged batteries.



Do not allow the battery electrodes to make contact with metals such as keys, as the battery may overheat, causing explosion or severe damage.



Please do not close the door with the deadbolt in the locked position. It may damage the product or cause a malfunction.

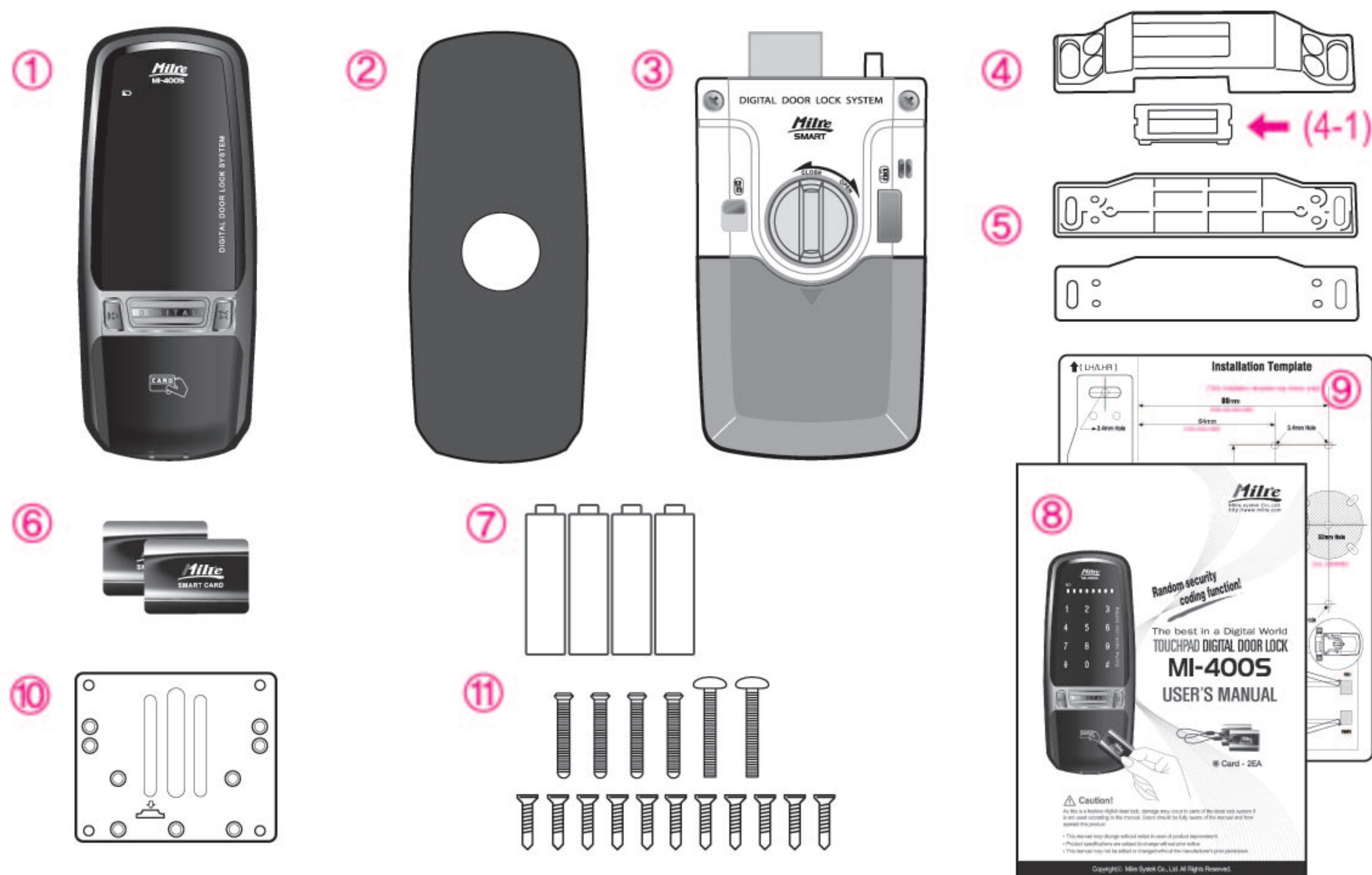


Do not force to pull the front cover. It may damage the product or cause a malfunction.



Please do not mix old with new batteries or use different types. Always use new alkaline batteries. Please make sure the batteries are inserted correctly (+/-) as indicated in the battery compartment. Otherwise, it may cause a leaks or explosions.

● Product specifications and composition

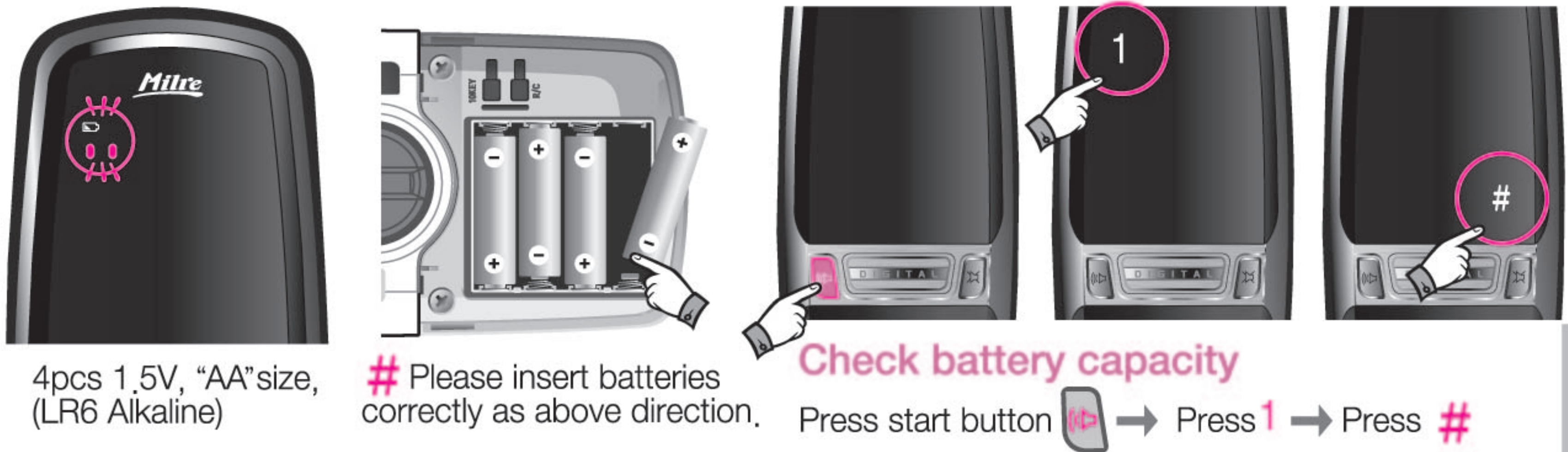


Name	Product Specification	Remark
1. Front Ass'y	70(W) x 175(H) x 22(D) mm	
2. Front Ass'y Rubber Pad	73(W) x 179(H) x 4(D) mm	
3. Back Ass'y	154(W) x 93(H) x 37(D) mm	
4. Striker	30(W) x 140(H) x 28(D) mm	
5. Striker Spacer	31(W) x 140(H) x 2(D) mm 31(W) x 140(H) x 4.5(D) mm	Using for height of striker
6. Card	2pcs	
7. Battery	4pcs (1.5V, "AA" size, LR6 Alkaline)	
8. User Manual	User guide	
9. Installation Template	Using for installation of front Ass'y and back ass'y (To make hole)	
10. Mounting Plate	77(W) x 87(H) x 3(D)mm	
11. Screw Set	11pcs (For mounting plate) 2pcs (For front Ass'y) 4pcs (For back Ass'y)	FH T4 X 19 TH M5 X 30 OH M5 X 29
12. Door thickness	For 40 ~ 50mm	

(4-1) Dead bolt guider : Should remove after finishing installation.

● How to check remained battery capacity / How to replace batteries

When the indicating lamp is flickering with warning alarm sound, please replace all the batteries immediately.



● How to apply external power in the emergency

When the battery is entirely exhausted and door lock is not activated, please contact 9V (6LF22) battery to emergency power terminal. Once the door lock is activated with 9V battery, open the door by secret code or card key and replace the batteries in back ass'y.



Notes

- If the sound level is in "Mute" mode, only the indicating lamp is flickering with no warning sound.
- Please use battery of 1.5V, "AA" size, LR6 Alkaline.
- Do not use rechargeable batteries.
- **Battery 's life-span is around one year with 20 times operation in a day.**
- Battery's life is variable as per environment & frequency of operation.
- Position of polarity is in regardless.

● How to use touch pad numeric button



This model has touch type numeric pad. Numeric pad is turned on when you press start button or mute button.

● Random security code function



After input any numbers randomly and enter your secret code, then door is opened.

When you bring friends or another visitor to your home and if you don't want to reveal secret code to them. You may press any number randomly with no limitation, and then input your registered secret code finally. Then, you can open the door with no showing your secret code to them.

● How to control volume of operating sound

Sound volume can be controlled from mute to Max, 8 level



※ Press 1 : For maximum volume level / Press 0 : For mute



Notes

- Do not wear gloves during operation for touch pad.
- Press number with your finger tip.
- Press each number clearly.
- Please keep clean the touch pad. Dust or other materials on pad can cause malfunction.
- Clean the pad with soft cloth.
- Sound volume control is available when the door is closed.

● Register / change secret code

Bik ~



10KEY
R/C

2



1 2 3
4

~ Birik Birik



*

4



DIGITAL

1

Open battery cover and press [10key] button shortly.

2

Enter new secret code.
(Ex:1234)

3

Press * button,
then new code is registered
with with "brik~brik~" sound.

4

Press start button ,
then registration is completed.



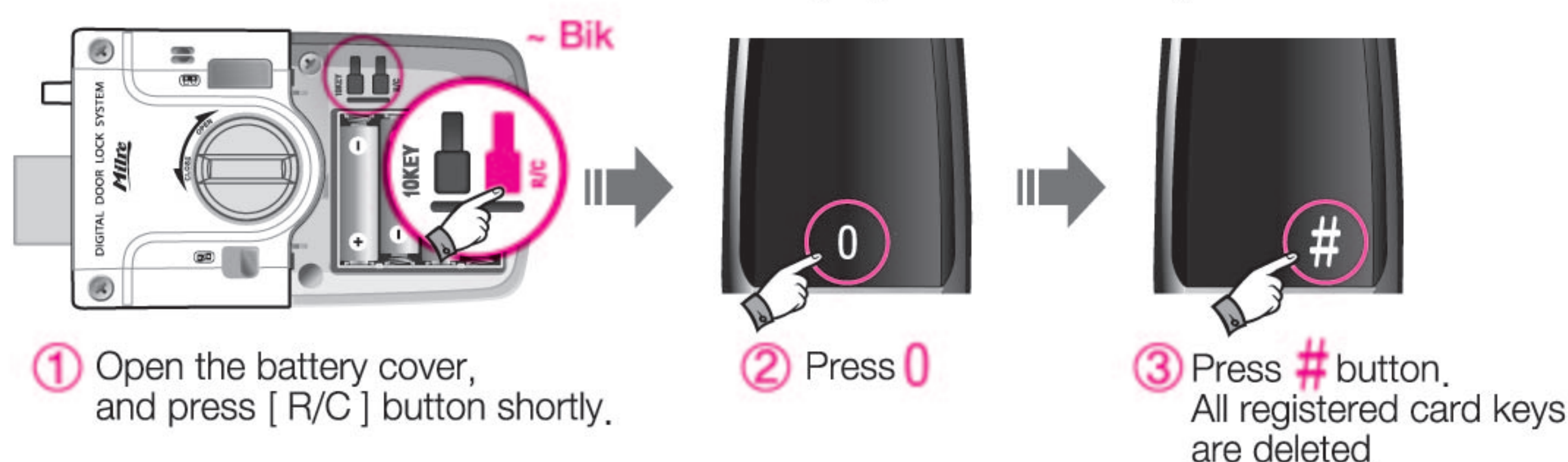
Notes

- Factory setting secret code is '1234'.
- When you register new secret code, all the registered secret code are deleted automatically.
- Secret code can be registered from 4 to 12 digits.
- Max. 8 of secret codes can be registered.
- To register multiple secret code, press new secret code and press * button shortly.
- After changing secret code, please verify it by unlocking with new secret code.

● How to register card key

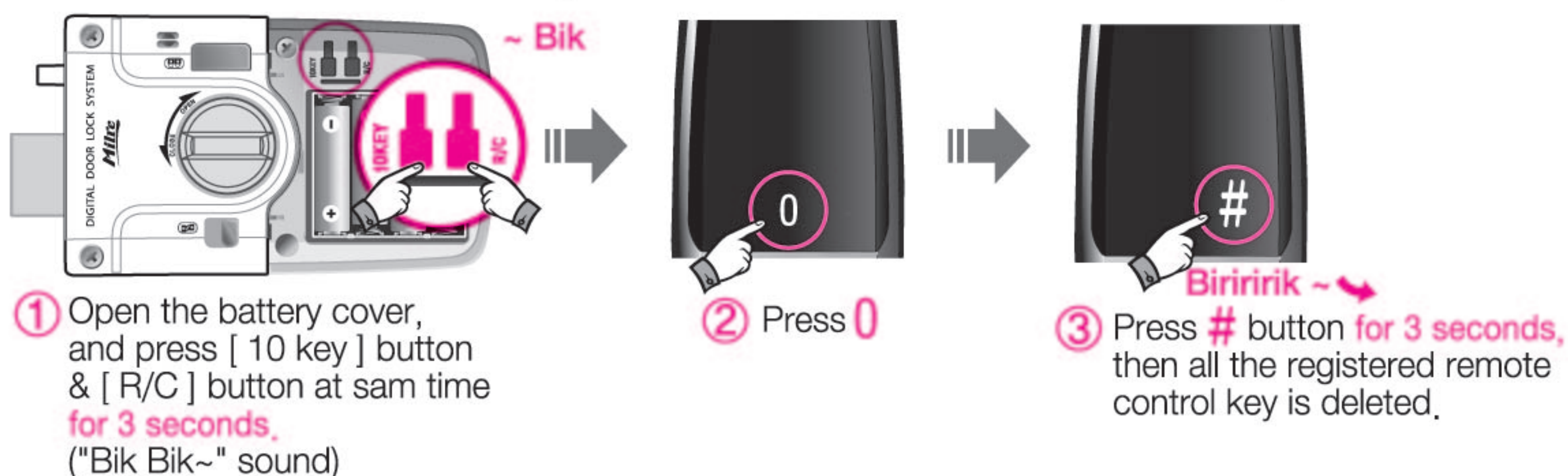


● How to remove card key (Delete all)



● How to delete all of normal memory

This is function to delete all the registered normal secret code & remote control key.



Notes

- Card key can be registered up to 20EA.
- With registration of new card key, previous card keys will be deleted automatically.
- No function to delete card key individually.
- If you lost all card key and forget your secret code, digital door lock shall be break to open the door.
- For high security, please use card keys which is supplied by Milre System.
- When you touch the registered card key again or two card keys in same time, there will be error sound of "Bik Bik~".
- After deleted memory can't be restored.

● How to open the door from outside

1. By secret code or card key



- 1) Press start button
- 2) Enter secret code or touch card key
- 3) Press one of , start button or mute button then door is opened.

2. Open the door in mute



Press "Mute" button and open the door with secret code or card key, then there will be no operating sound.

● How to close the door from outside

1. To lock in AUTO Locking mode

When you close door, door is locked automatically with "Bik Bik" sound.



2. To lock in MANUAL Locking mode

Close door and press start button or mute button, then door is locked.

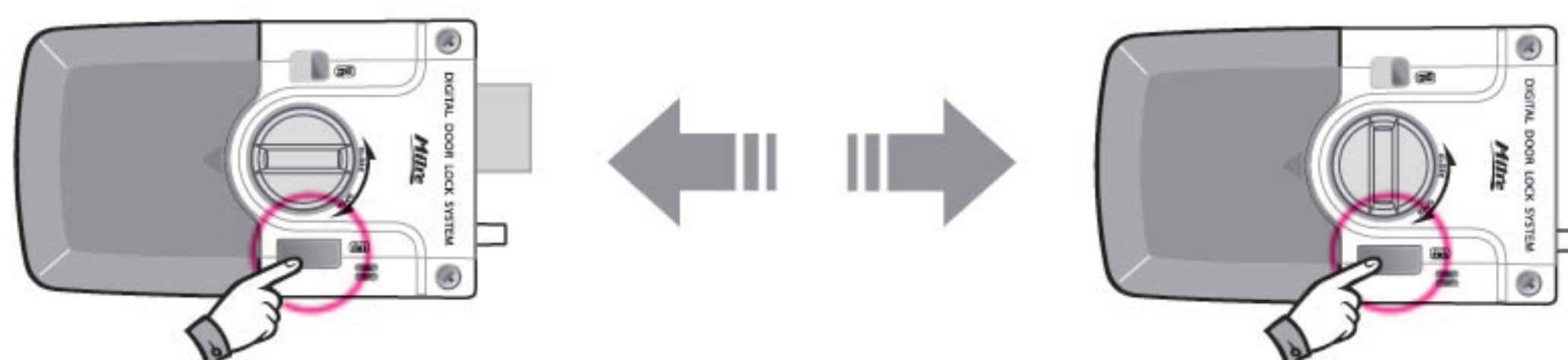


Notes

- Even the door is opened, if you press start button or mute button, it shall be locked.
- Before touch the card key, please activate the door lock by pressing start button or mute button.
- When you lock the door by mute button, there will be no sound.

● How to open or close with " One touch button " from inside.

It is easy to open or close the door with "One touch button" from inside.



Press in locked status, it will be unlocked.

Press in unlocked status, it will be locked.

● How to open or close manually with " Open knob " from inside.

In emergency, it is available to open or close manually with "Open knob" from



Turn to clockwise, it will be unlocked.

Turn to counterclockwise, it will be locked.



How to set "Auto/manual" locking mode

1. In "Auto locking mode", door will be locked automatically when the door is closed.
2. In "Manual locking mode", door is not locked automatically when the door is closed.

Press start button
or mute button

Press # button

Enter secret code
(ex: 1234)

Contact card key

Press # button

Press 5
[Auto locking mode]
Press 6
[Manual locking mode]

Press 1 : For maximum volume level / Press 0 : For mute



Notes

- Even the door is opened status, door is locked by One touch button.
- **[AUTO Locking]** This is automatic locking function for door when it is closed.
- In case of unregistered secret code, there will be warning alarm sound.
- In **[Auto Locking]** mode, if you press touch sensor, door is locked too.
- In **[Manual Locking]** mode, even though you close the door, it keeps unlocked status.



How to suspend One touch button

(Guide for security device of Auto Lock / Unlock button)



Keep pressing
start button
or mute button



Contact card key,
then "One touch button"
will be suspended.

Or



Press
start button



Press
button



Press secret code
(ex: 1234)

Or



touch the
card key



Press # button



Press 4 to
[Suspend one touch button]



How to release One touch button



Press start button
or mute button



Enter secret code
(ex: 1234)



Contact card key,
then One touch button
will be released.

Or



Press
start button



Press
button



Press secret code
(ex: 1234)

Or



touch the
card key



Press # button



Press 7 to
[Release one touch button]



Notes

- Setting of "One touch button" is available when the door is closed.
- It will be locked automatically when it is set to suspend mode.
- In suspend mode, when you open the door by secret code or card key from outside, suspend mode shall be released automatically.
- "Automatic open/close security device" means suspend mode of "One touch button".



Warning function against mischief or hacking

If wrong secret code or unregistered card is applied over 5 times, alarm system is activated with warning sound and all the function of door lock is suspended for one minutes.



Biyoong~ Biyoong~

Apply wrong secret code **for 5 times**
Unregistered card key **for 5 times**

After alarm sound,
system is suspended for 1 minutes.



Warning system against trespassing by force

Once the door is locked, alarm system is activated in 5 seconds.

If there is any trying of trespassing by force, it is warning with strong alarm sound for 2 minutes.

Biyoong~ Biyoong~



How to stop warning sound.



Press start button 



Enter secret code
(ex: 1234)

Or

Contact card key



Press start button 



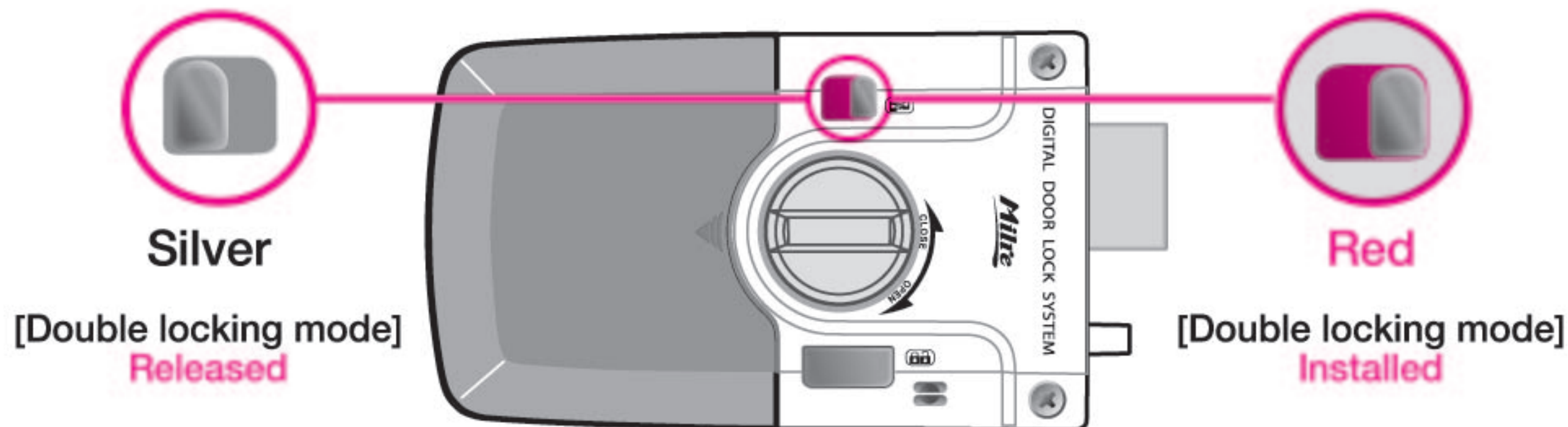
Notes

- Warning function is operating for secret code & card key individually.
- If the warning function against mischief or hacking, system is suspended for one minute.
- During suspended status, if you press "10key" or "R/C" button, it is released.
- Warning sound against trespass will continue for two minutes.
- During warning sound against trespass, if you enter secret code or contact card key, system will be changed to normal status.



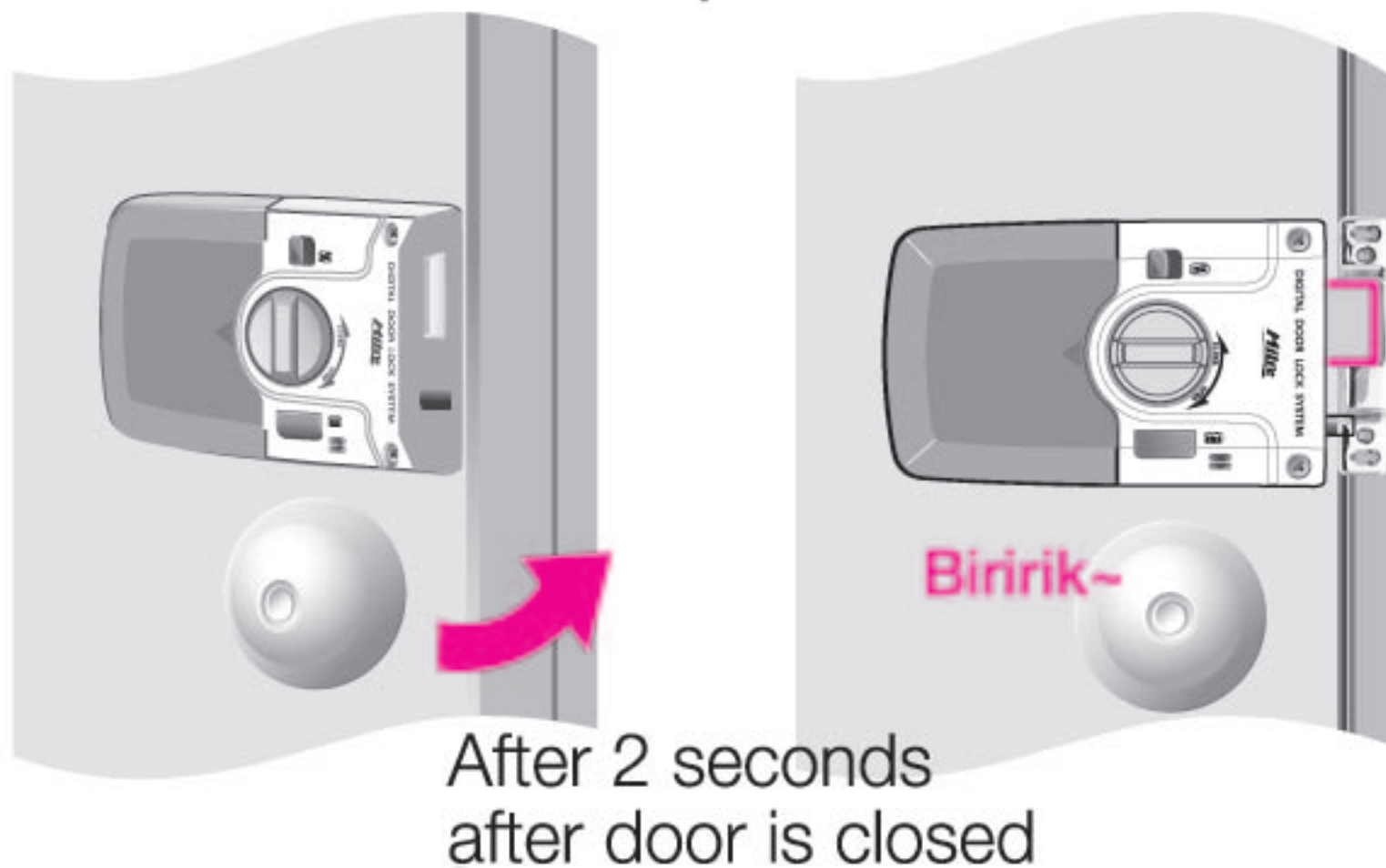
How to use Double locking system

In Double locking mode, function of door lock is suspended and can't open the door from outside.



Auto locking function

Being installed, it is locked automatically when the door closed.



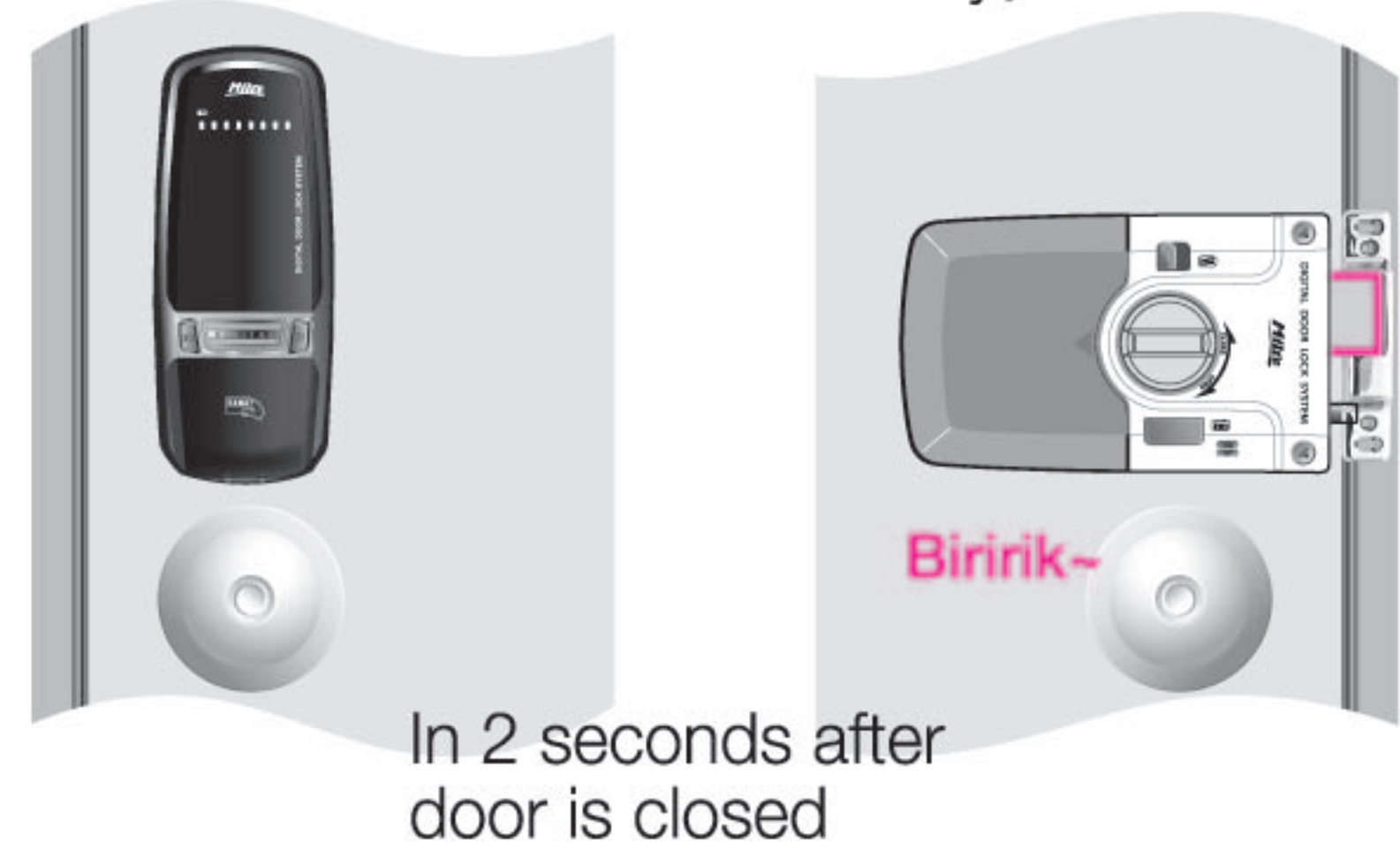
After 2 seconds
after door is closed

Refer to page 10 for setting this function



Auto relocking function

If the door is not opened in 7 seconds from unlocking, the lock is relocked automatically.



In 2 seconds after
door is closed

If you do not open the door within 7 seconds
after unlocking with secret code or card key,
it will be relocked automatically.



Notes

- In [Double locking] mode, the lock could not be released from outdoor with secret code or card key.
- In [Double locking] mode, from indoor, you can release lock by use of [Manual open/close knob].
- Intrusion alarm function still activating while [Double locking] mode.
- When volume is set to "mute", indicating lamp of [Double locking] mode is flickering without sound.
- Even if the door is opened, [Double locking] mode can be installed.
- If you open the door by "Open knob", auto relocking is not operated.
- Even in [Auto/manual locking] mode, [Auto relocking] mode is activating.
- Auto relocking function is different from [Auto/manual locking] function.
- If the door is not opened in 7 seconds from unlocking, the lock is relocked automatically.



Product Warranty



⌘ The warranty period shall be one year from the date of installation. (for agency)

Model		Serial No		Purchase Date	. . .	
Customer			Address			
Phone						
Agency			Installer		Phone	

- ⌘ Please keep this warranty for your after-sales service. You may have to pay for the service if you fail to present the warranty.
- ⌘ Failure to fill out form fields such as purchase date may void warranty.
- ⌘ The product may not be regarded as genuine, if no serial number is described on the warranty.



产品质量保证书



⌘ 产品保证期为自安装日起一年。 (销售单位填写)

型 号		编 号		安装日期 (购买日期)	. . .	
顾客姓名			地 址			
电 话						
销售单位			负责人		电 话	

- ⌘ 请妥善保管产品质量保证书。在售后服务时，必须出示产品质量保证书，否则按自费维修处理。
- ⌘ 必须填写保证书内的安装日期及销售单位(负责人)的详细内容。否则按自费维修处理。
- ⌘ 如无产品编号时，视为非正品，因此按自费维修处理。



CAUTION

Wrong usage may cause damage on parts of dead lock system.
User have to be fully aware of how to operate this product.
Read user manual carefully before using.

- Power : DC6V
- If the batteries are discharged entirely, please replace all the batteries immediately to new one.
- Do not insert the used batteries together with new batteries.
- Keep correct position when you insert batteries.

Address : 9F #201 ChunuiTechnopark II, 18, Bucheon-ro, 198beon-gil, Wonmi-gu, Bucheon-si, Gyeonggi-do, Korea
Tel : 82-32-623-0341 Fax : 82-32-623-0340
E-mail : sales@milre.com

Rev.01